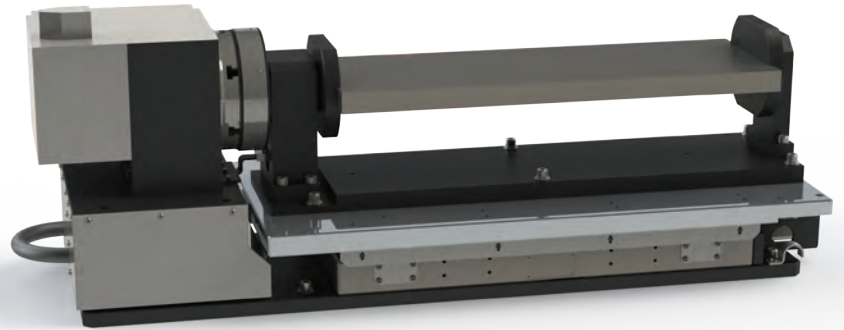




# MIDACO Trunnion System

## for Automatic Pallet Changer with 4th Axis

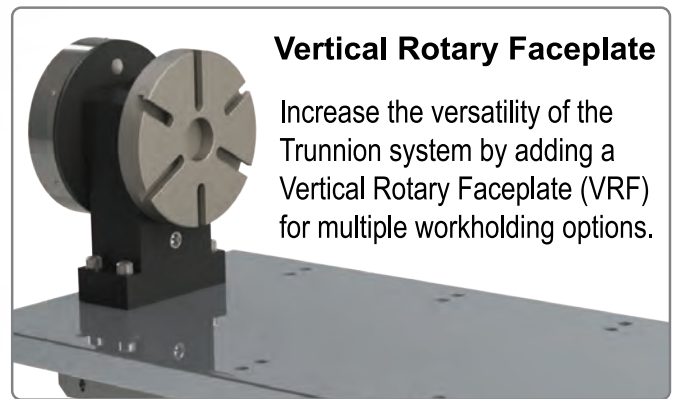


*Trunnion and Actuator Assembly shown with a 4th axis rotary-indexer (not included).*

### Trunnion System includes:

- 1 - 4th Axis Actuator Assembly
- 2 - Trunnions

*Note: Trunnion System does not include the 4th Axis Rotary-Indexer.*



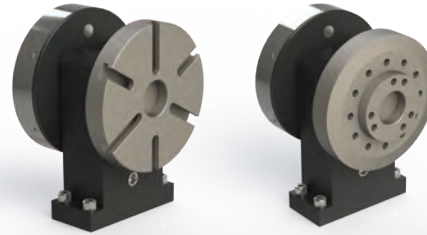
### Vertical Rotary Faceplate

Increase the versatility of the Trunnion system by adding a Vertical Rotary Faceplate (VRF) for multiple workholding options.

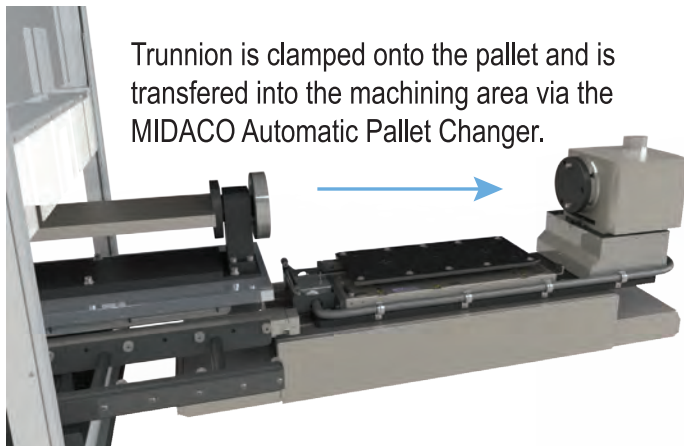
**ONLY ONE** 4th Axis is required on any **NEW OR EXISTING** Automatic Pallet Changer to get the benefits of a Horizontal on a Vertical with the MIDACO Trunnion System.  
**NO CABLE MANAGEMENT NEEDED!**

# Trunnion System for Automatic Pallet Changer

- MIDACO Trunnion and VRF on an Automatic Pallet Changer to be used with 4th Axis.
- Only ONE 4th Axis required to operate 2 trunnions.
- Designed to machine all sides of the part.
- **NO CABLE MANAGEMENT** required as 4th Axis stays in the machine tool.
- Add to a New MIDACO Pallet Changer or retrofit to an Existing Pallet Changer.



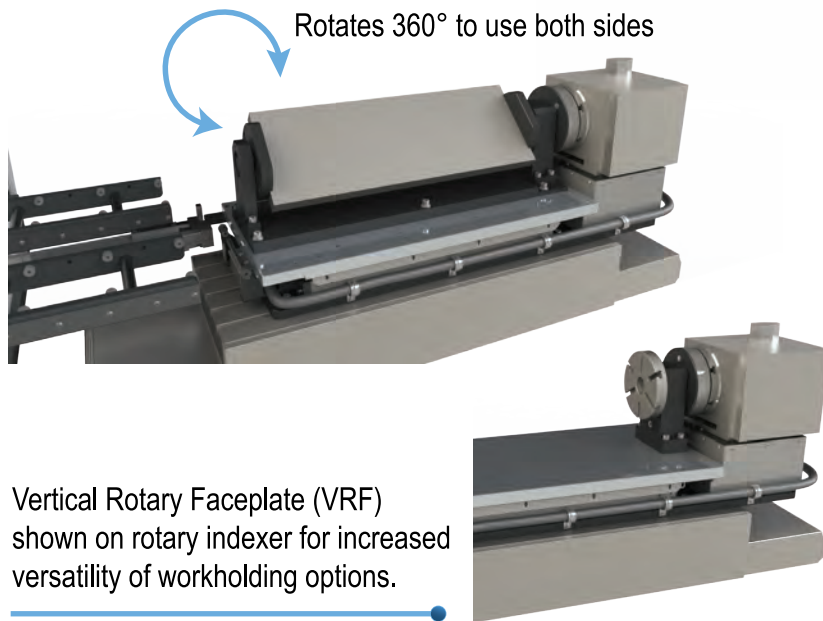
Increase 4th Axis productivity by adding a Trunnion or a VRF to a MIDACO Pallet Changer



Trunnion is clamped onto the pallet and is transferred into the machining area via the MIDACO Automatic Pallet Changer.

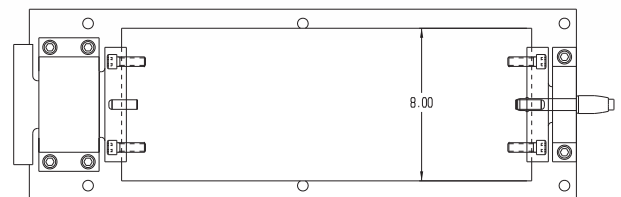


Trunnion shown on a MIDACO pallet

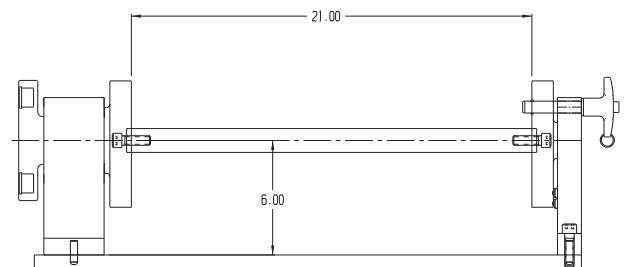


Rotates 360° to use both sides

Vertical Rotary Faceplate (VRF) shown on rotary indexer for increased versatility of workholding options.



Shown on the pallet with the trunnion being 21" (533.4mm) long x 8" (203.2mm) wide.



MIDACO products are designed for machines with stationary guarding. Some machines require options or customization. Patent pending. Contact your sales representative to confirm model and specifications for all applications. Machinery subject to modifications and amendments.



**MIDACO CORPORATION**  
2000 E. Touhy Avenue  
Elk Grove Village, IL 60007 USA  
phone: (847) 593-8420  
fax: (847) 593-8451  
email: [midaco@midaco-corp.com](mailto:midaco@midaco-corp.com)

**KEEP THE SPINDLE RUNNING!**

See how we fit your application  
[www.midaco-corp.com](http://www.midaco-corp.com)

