



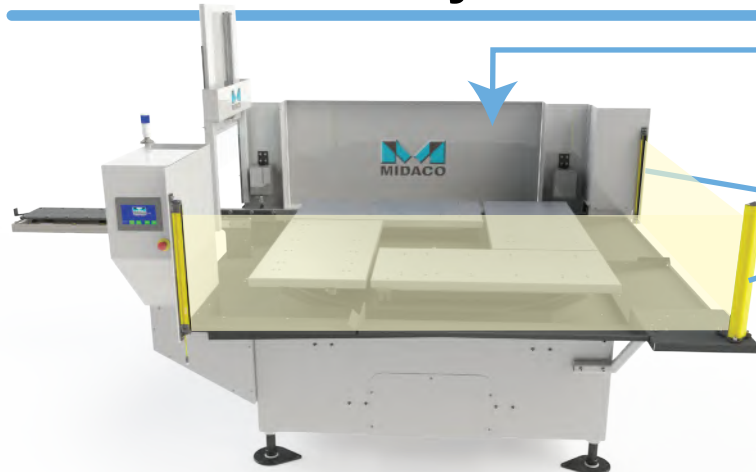
# Automatic Rotary 4-Pallet Changer

One Shuttle - One Receiver - **FOUR** Pallets scheduled and ready to feed your VMC for multiple hours of unattended machining.



Whether running high volume production of the same part or programming several different set-ups, the **Automatic Rotary 4-Pallet Changer** will increase operator walk-away time and maximize productivity on your new or existing vertical mill. Save money with less spindle idle time due to part change-over and quote your customers more competitively.

# Automatic Rotary 4-Pallet Changer



• Easily load and unload parts onto pallets with a crane or robot without any overhead obstruction.

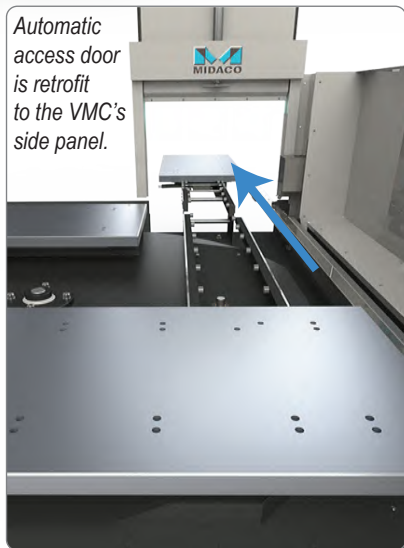
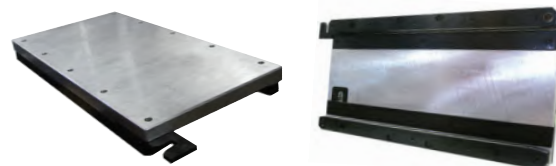
• System includes 2-sided Light Curtain shuttle guarding via light emitters, mirror and sensors. Pallet change will not occur if invisible light beam is breached.

• Cast iron pneumatic receiver, with hardened and ground locating pins, mounts directly onto the machining center table.

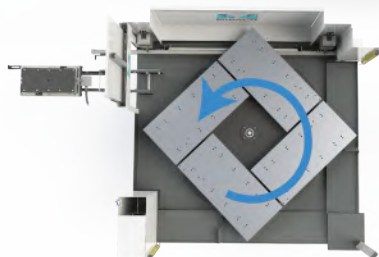


• Once a job cycle is complete, pallets will rotate automatically and the shuttle's servo drive transfers the next pallet onto the receiver.

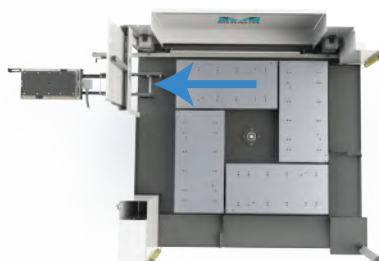
• Cast aluminum pallets, with durable precision ground steel rails and hardened bushings, assure +/- 0.0001" (0.0025mm) repeatability.



Automatic access door is retrofit to the VMC's side panel.



Full 360° rotation



Designed with "flip-up" panels on two (2) sides of the shuttle for convenient access to parts on pallets.

## Specifications:

- 1 - servo drive shuttle system with automatic door and 2-sided Light Curtain guarding.
- 4 - cast aluminum pallets up to 50" x 24" (1270mm x 609mm).
- 1 - cast iron pneumatic receiver with a weight capacity of up to 2,000 lb (908kg) per pallet on largest model. *{with weight evenly distributed on pallet}.*
- Control panel is fully integrated with the VMC via M-codes.

MIDACO pallet systems are designed for machines with stationary guarding. Some machines require options or customization. Patent pending. Contact your sales representative to confirm model and specifications for all applications. Machinery subject to modifications and amendments.



**MIDACO CORPORATION**  
2000 Touhy Avenue  
Elk Grove Village, IL 60007 USA  
phone: (847) 593-8420  
fax: (847) 593-8451  
email: midaco@midaco-corp.com



**KEEP THE SPINDLE RUNNING!**  
See how we fit your application   
[www.midaco-corp.com](http://www.midaco-corp.com)