

G15 Specifications



Port Dimensions (16.6 GPM Max.)

Intake & discharge connection:

Aluminum (ADC-12)	1/2" Female NPT
Pure Polypropylene (PP)	1/2" Female NPT
Stainless Steel (316)	1/2" Female NPT
Kynar®	1/2" Female NPT
Air inlet (incl. ball valve):	1/4" Female NPT
Air exhaust (incl. silencer):	3/8" Female NPT

Maximum Liquid Temperature*

Diaphragm Material	Temperature
Buna N	158°F (70°C)
Santoprene® (TPO)	212°F (100°C)
PTFE	212°F (100°C)
Hytrel® (TPEE)	248°F (120°C)

*The maximum liquid temperature for metal pumps is determined by the elastomer (diaphragm material). Pure Polypropylene pumps have a maximum liquid temperature of 180°F (82°C) regardless of diaphragm material.

Air Supply Pressure (All Models)

20 – 100 PSI (1.4 – 7 kgf/cm²)

Discharge Volume Per Cycle

All diaphragms: 0.040 - 0.050 gallons

Maximum Cycles Per Minute

All diaphragms: 373

Maximum Size Solid

1/32" (1 mm)

Maximum Dry Suction Lift

Rubber fitted pump capability: 13.5'

PTFE fitted pump capability: 11'

Air Motor

Aluminum - standard on metal pumps.
Polypropylene - standard on plastic pumps.

Valve Type

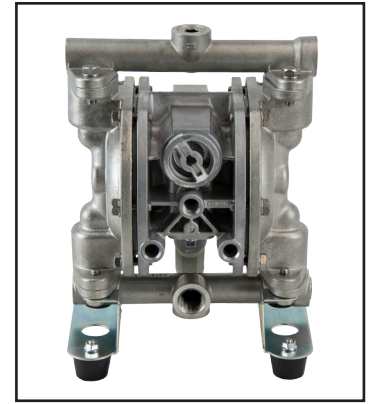
Ball

Notes: Santoprene® fitted pumps include EPDM wetted o-rings.

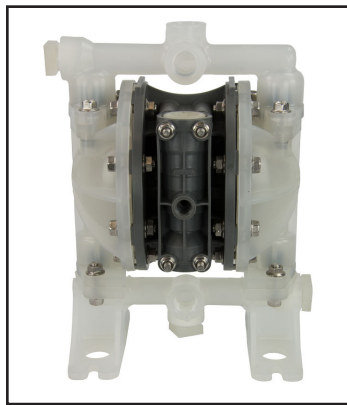
Buna N is not available with Kynar® pumps.



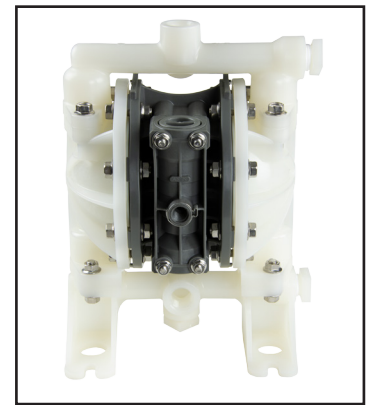
Aluminum (NPT)
Dimensions: 7.64"W x 10.43"H
Net Wt.: 11.9 lbs. (5.4 kg)
Shipping Wt.: 15 lbs.



Stainless Steel (NPT)
Dimensions: 7.64"W x 10.43"H
Net Wt.: 18.1 lbs. (5.4 kg)
Shipping Wt.: 22 lbs.

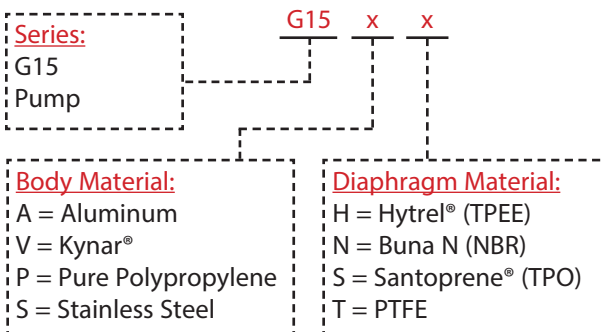


Pure Polypropylene (NPT)
NPT Dimensions: 8.58"W x 11.25"H
Net Wt.: 5.74 lbs. (2.6 kg)
Shipping Wt.: 9 lbs.



Kynar® (NPT)
NPT Dimensions: 8.58"W x 11.25"H
Net Wt.: 7.72 lbs. (3.5 kg)
Shipping Wt.: 12 lbs.

Model Number Nomenclature



G15 Global Series Models

G15AH	G15SH	G15PH	G15VH
G15AN	G15SN	G15PN	G15VS
G15AS	G15SS	G15PS	G15VT
G15AT	G15ST	G15PT	

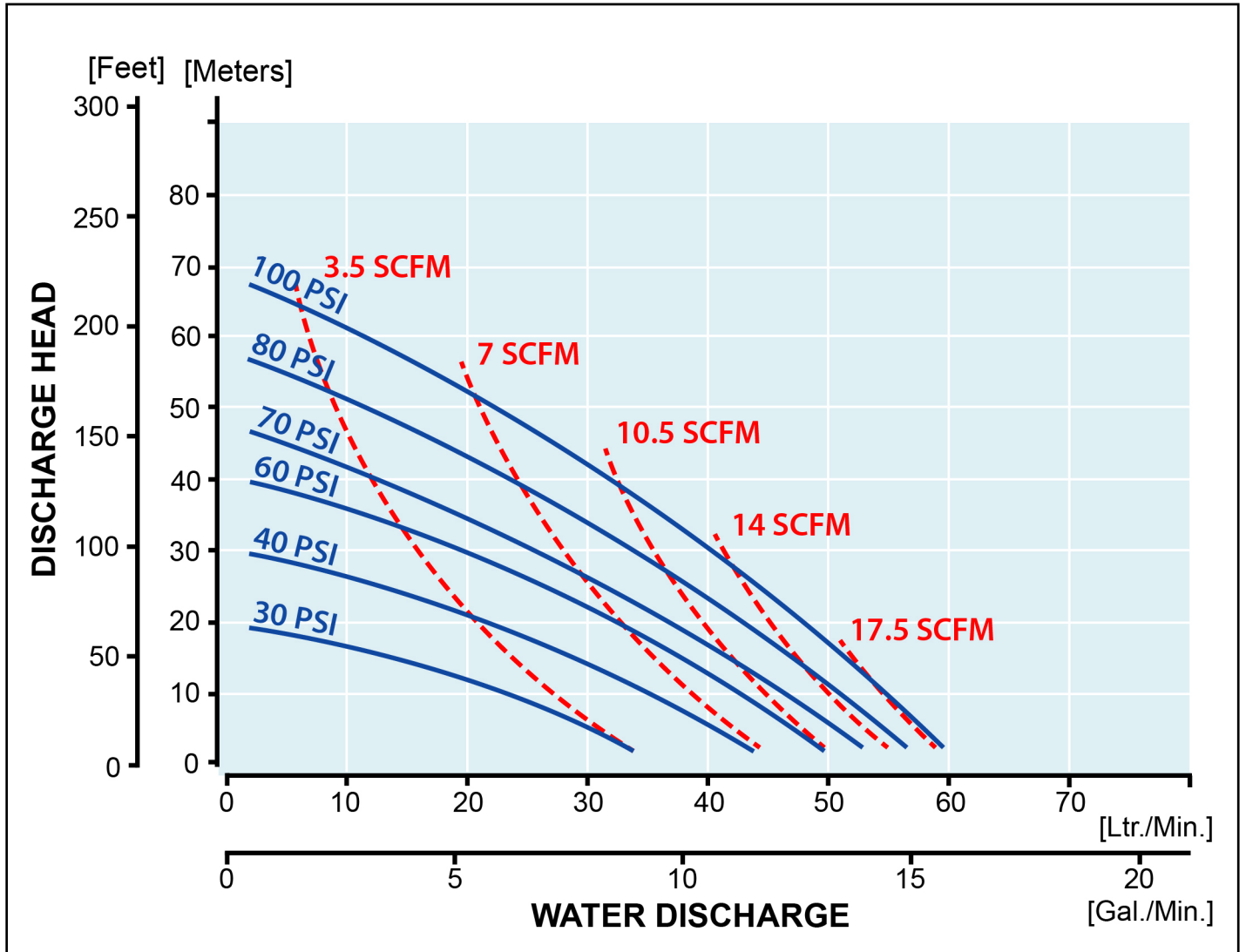


Yamada America, Inc. 955 E. Algonquin Rd., Arlington Heights, IL 60005
USA Toll-Free: 800-990-7867 | Phone: 847-631-9200 | Fax: 847-631-9273
Email: sales@yamadapump.com | Web: yamadapump.com

© 2022 Yamada America, Inc.

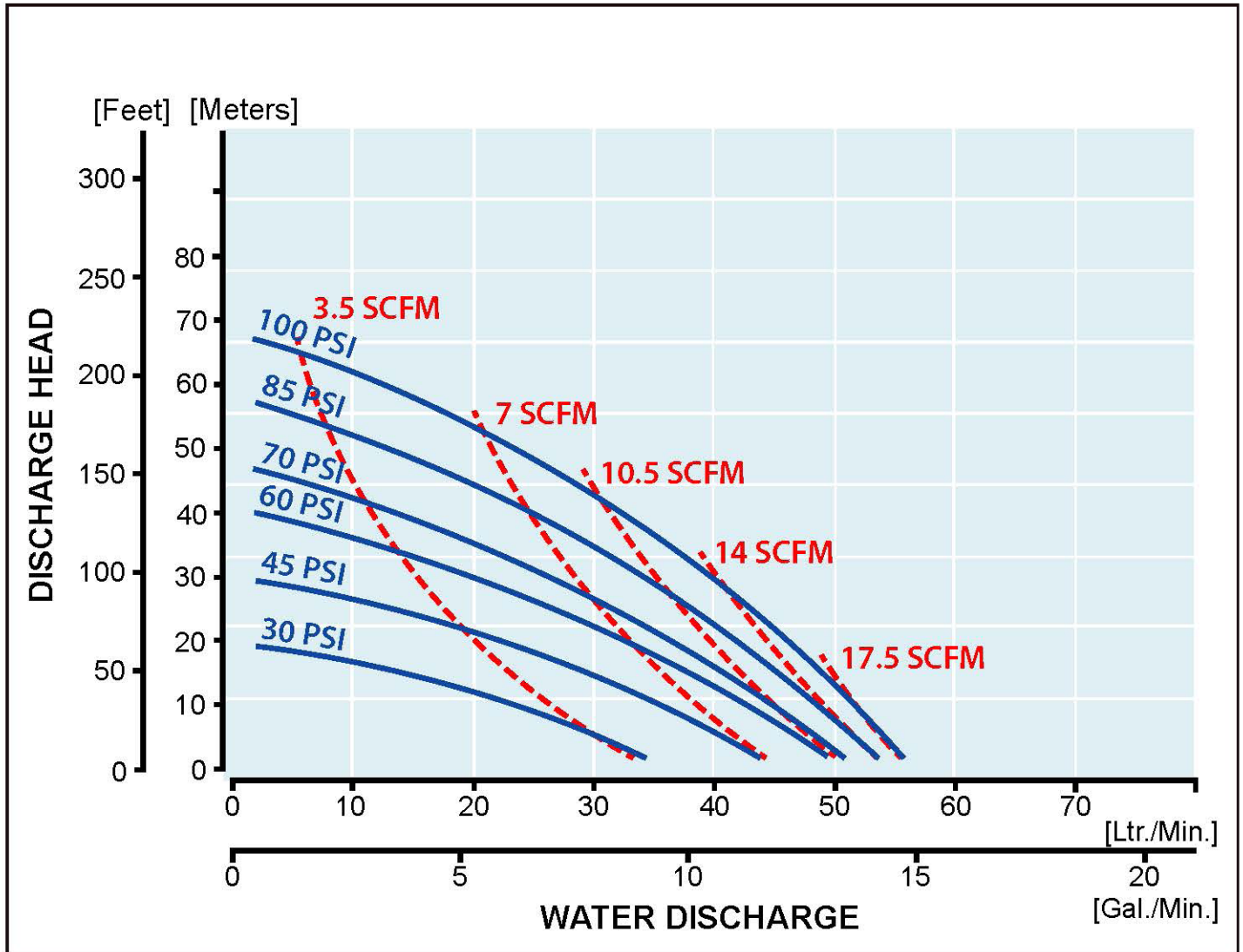
G15AN Performance Curve

G15 Buna N Rubber Diaphragm Performance Curve (Aluminum)



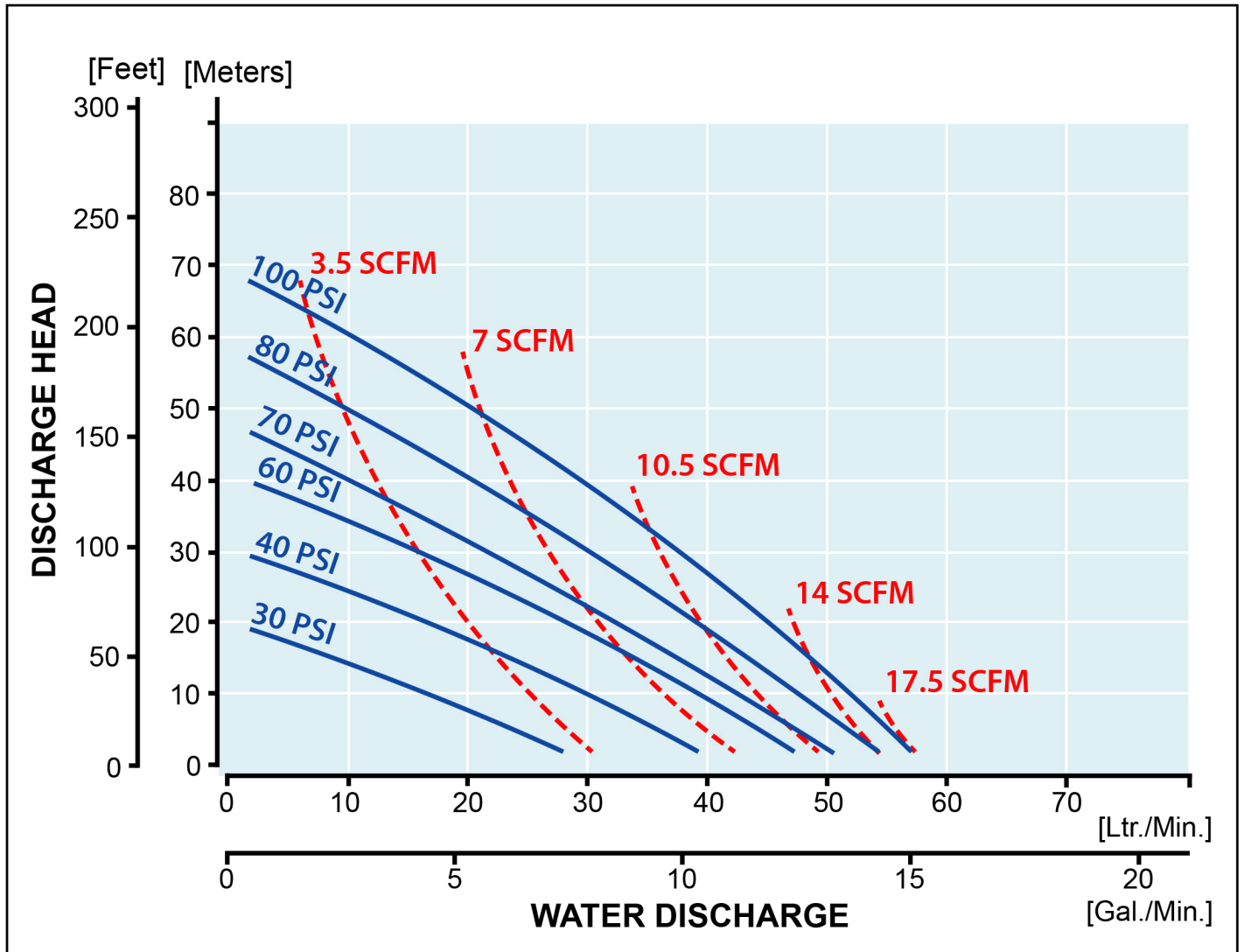
G15AH, G15AS Performance Curve

G15 Hytrel® & Santoprene® Diaphragm Performance Curve (Aluminum)



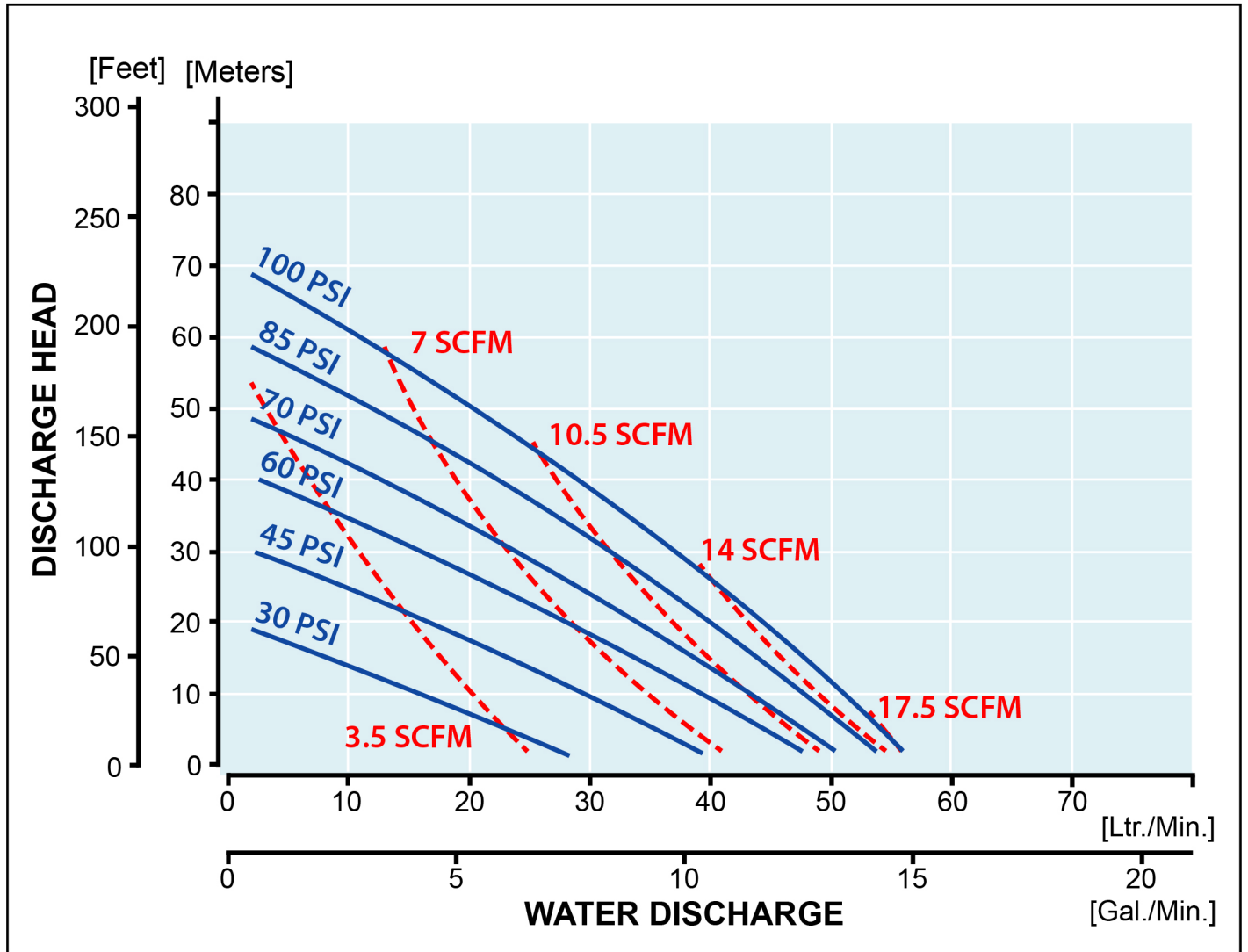
G15AT Performance Curve

G15 PTFE Diaphragm Performance Curve (Aluminum)



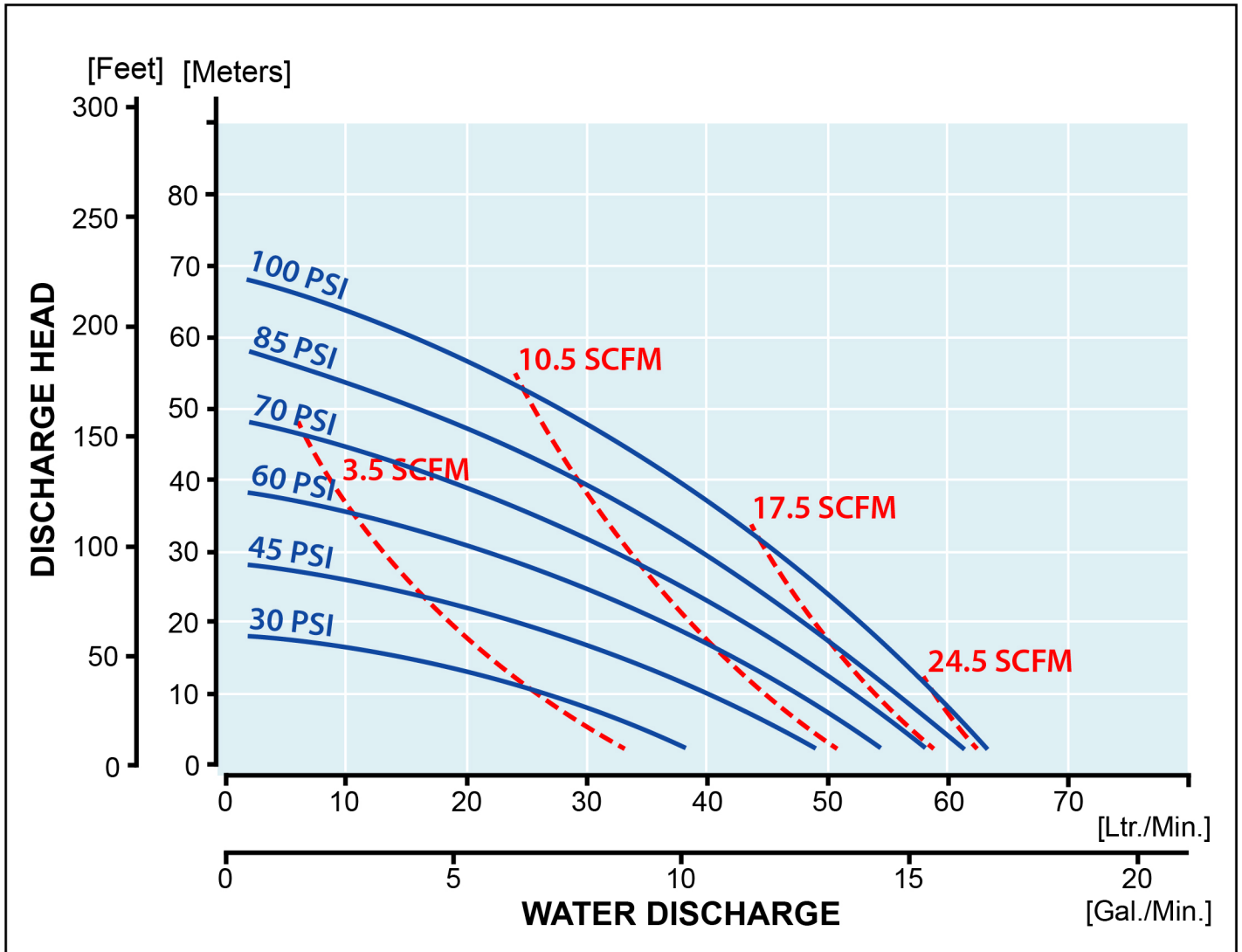
G15S Performance Curve (all)

G15 Rubber & PTFE Diaphragm Performance Curve (Stainless Steel)

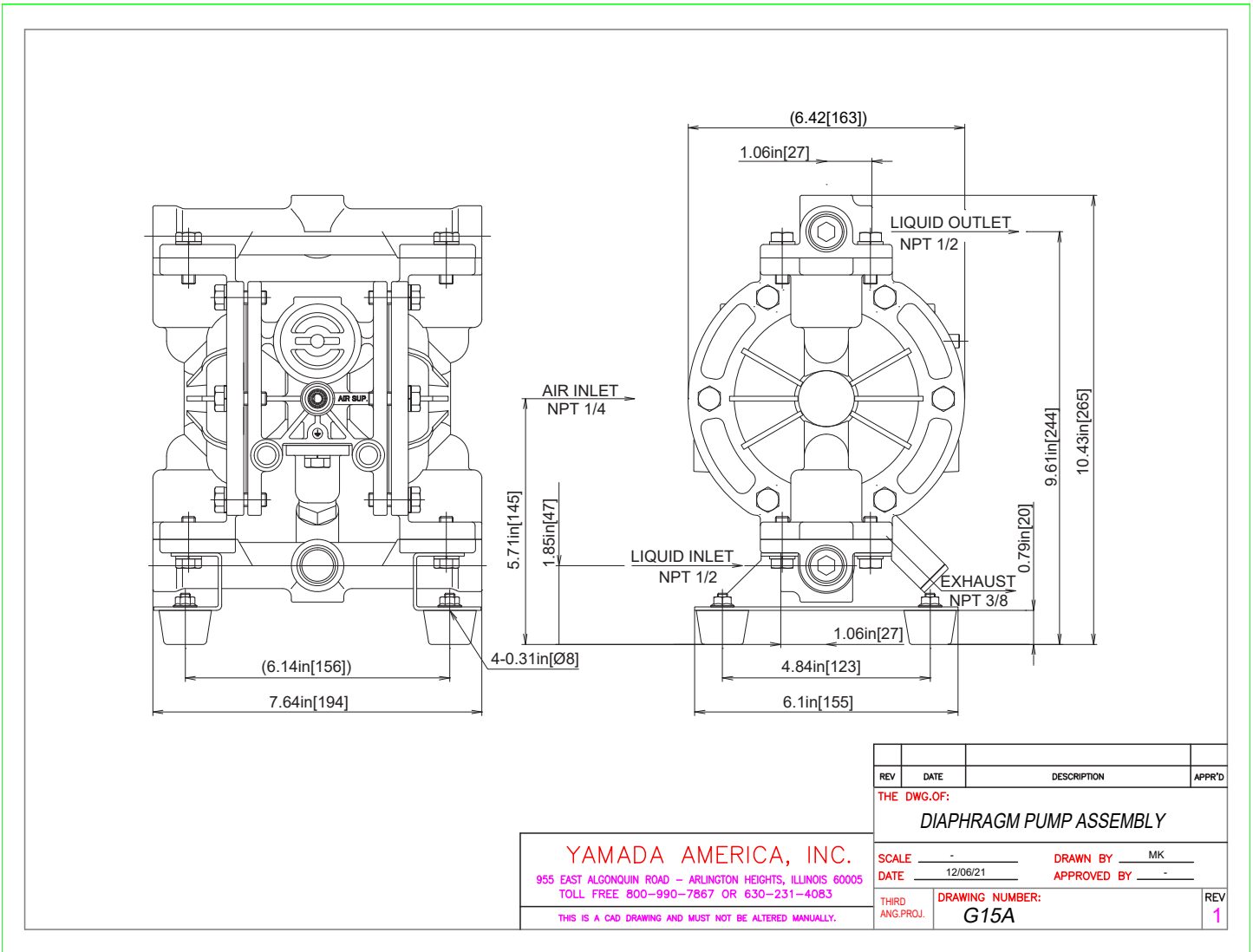


G15 Plastic Performance Curve (all)

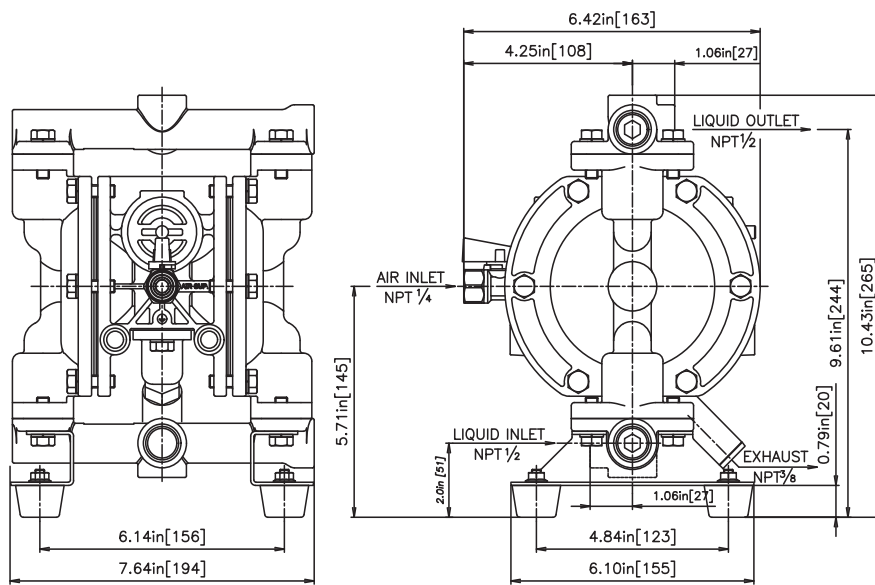
G15 Rubber & PTFE Diaphragm Performance Curve (Polypropylene & Kynar®)



G15 Aluminum



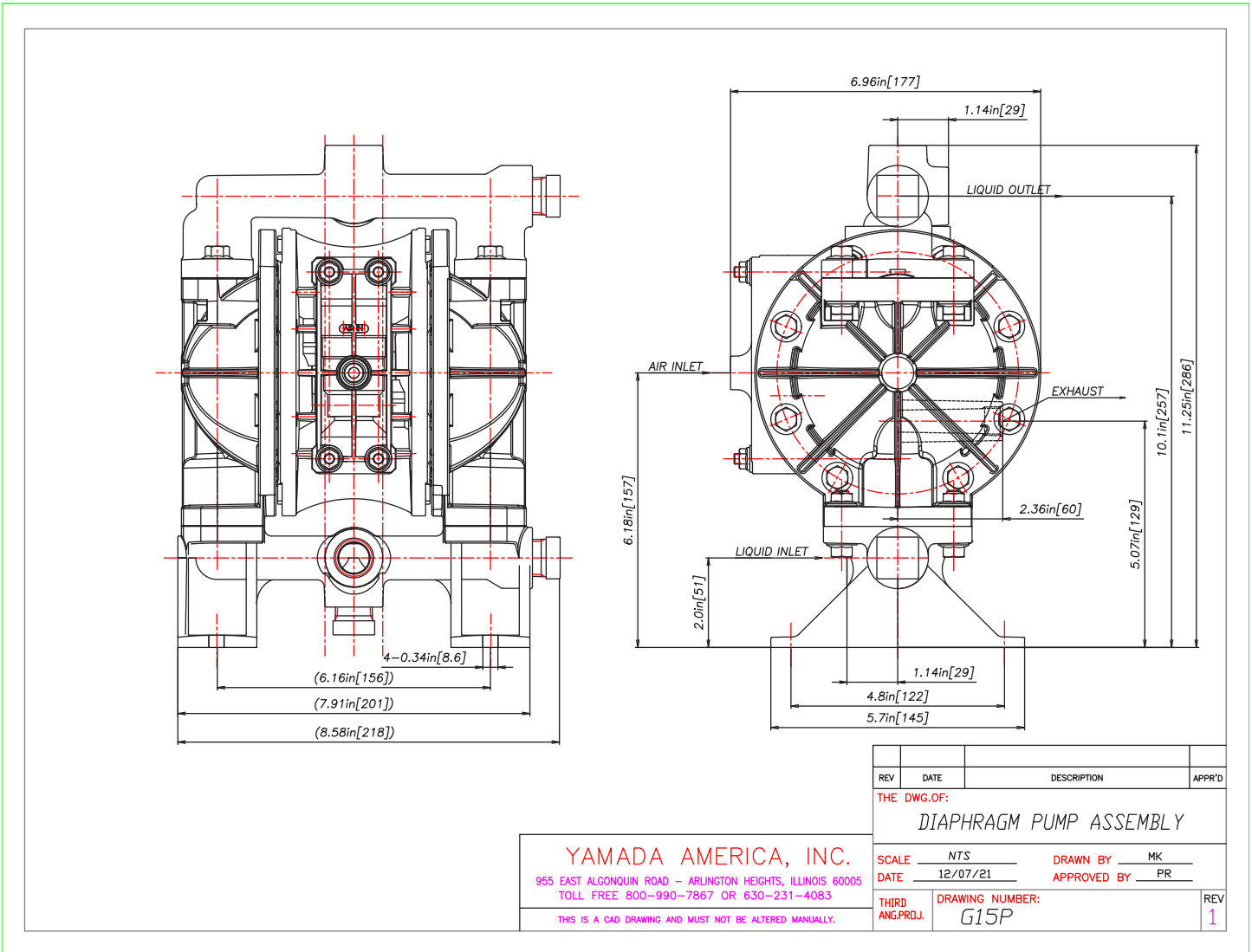
G15 Stainless Steel



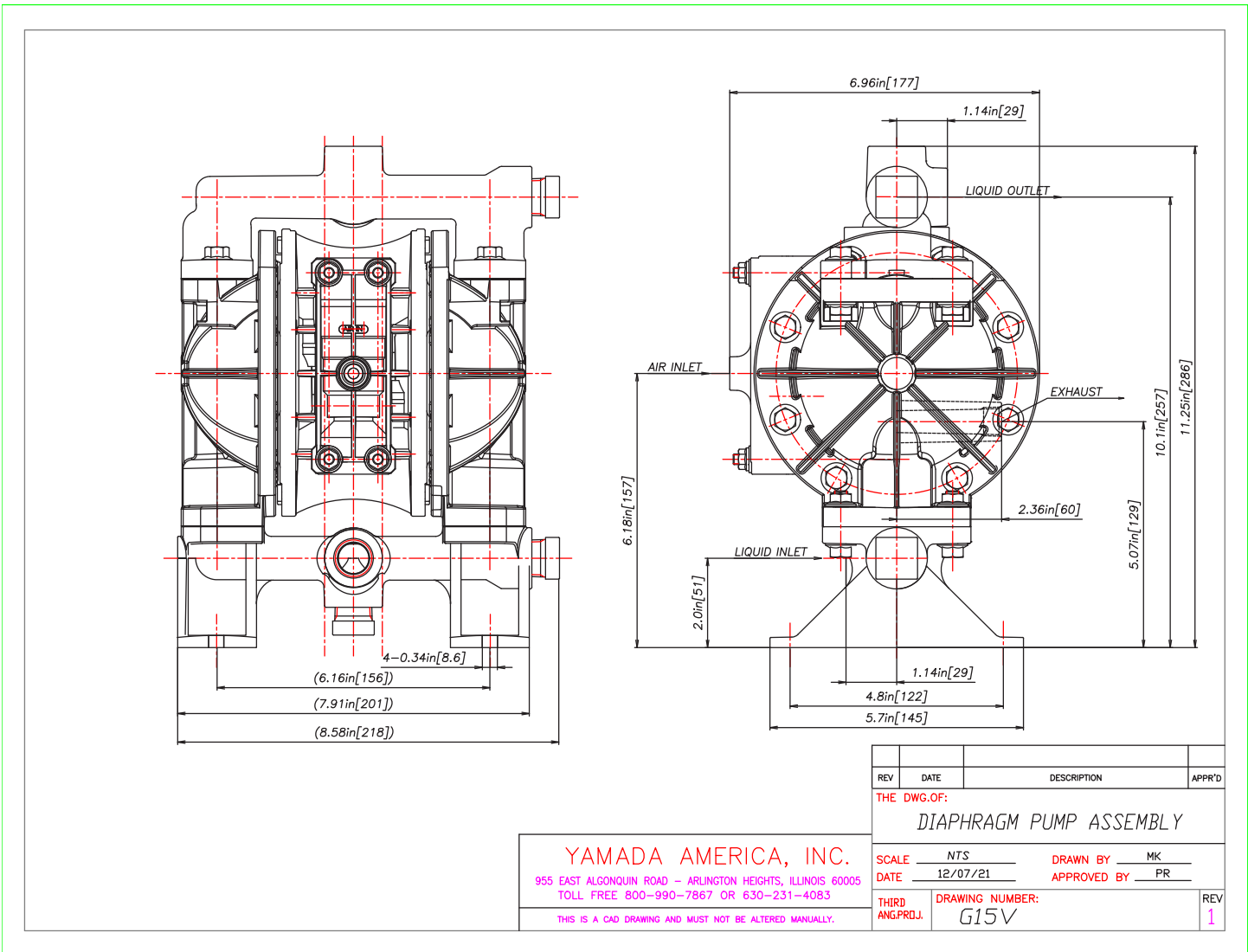
REV	DATE	DESCRIPTION	APPR'D
THE DWG.OF:			
YAMADA DIAPHRAGM PUMP			
SCALE	NTS	DRAWN BY	MK
DATE	12/06/21	APPROVED BY	PR
THIRD ANG.PROJ.	DRAWING NUMBER:		REV
	G15S		1

YAMADA AMERICA, INC.
 955 EAST ALCONQUIN ROAD - ARLINGTON HEIGHTS, ILLINOIS 60005
 TOLL FREE 800-990-7867 OR 630-231-4083
THIS IS A CAD DRAWING AND MUST NOT BE ALTERED MANUALLY.

G15 Polypropylene



G15 Kynar



AutoCAD® is a registered trademark of Autodesk, Inc.

Hytrel® is a registered trademark of E.I. du Pont de Nemours and Company.

Kynar® is a registered trademark of Arkema.

Nordel™ is a trademark of DuPont Dow Elastomers.

Ryton® is a registered trademark of Chevron Phillips Chemical Company.

Santoprene® is a registered trademark of Advanced Elastomer Systems.

Viton® is a registered trademark of DuPont Performance Elastomers.

Swagelok™ & **VCR**™ are trademarks of the Swagelok Companies.

Flaretek® is a registered trademark of Entegris.

Garlock ONE-UP® is a registered trademark of W.L. Gore & Associates.

Yamada® is a registered trademark of Yamada America, Inc.

SolidPRO Designed to Pump Fluids Containing Solids® is a registered trademark of Yamada America, Inc.

Xtreme Duty Pro XDP® is a registered trademark of Yamada America, Inc.

The Proof's in the Pump® is a registered trademark of Yamada America, Inc.

The Proof is in the Pump® is a registered trademark of Yamada America, Inc.

Engineered to Perform. Designed to Outlast.® is a registered trademark of Yamada America, Inc.

Due to Yamada's continued commitment to product improvement, specifications may change without notice.