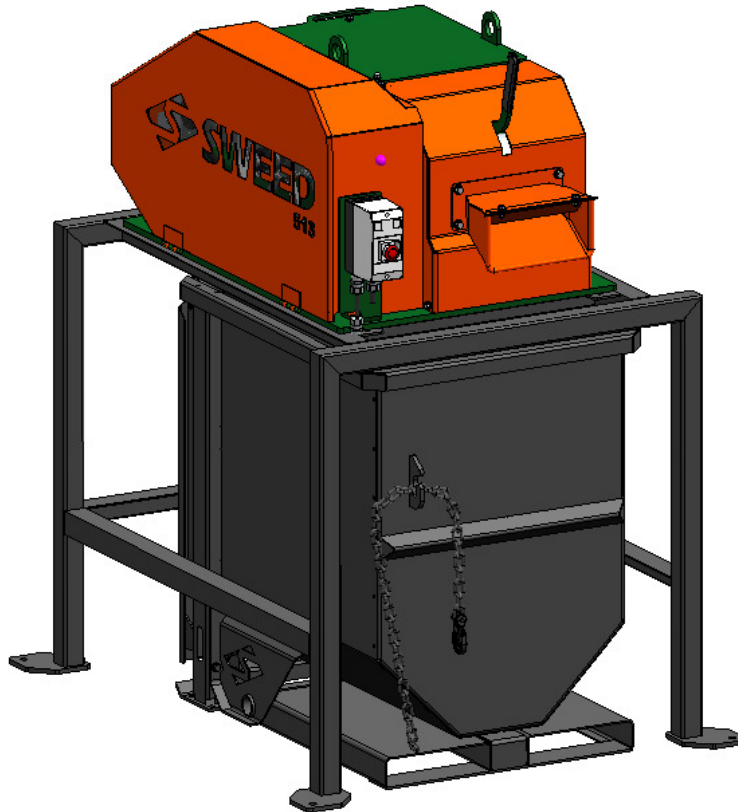


MODEL 513AH SCRAP CHOPPER



SERIAL #: _____

*Picture may not reflect actual chopper detail. Modification may be added for customer specifics or customization add-ons.

SWEED Machinery, Inc.
653 2nd Avenue | P.O. Box 228 | Gold Hill, OR 97525 USA
TOLL FREE: 1-800-888-1352 | PH: 1-541-855-1512 | FAX: 1-541-855-1165
Email: sweed@sweed.com | Web: www.sweed.com

Revision	Date	Written By	Description of Change	Reviewed By
0	11/8/2022	DAVE L.	Original Issue of Building Spec for General Publication	DAL



Toll Free: 1-800-888-1352

**MACHINE SPECIFICATIONS
AND REPLACEMENT
PART DRAWINGS**

Model: 513AH
Top Level: AD075588
Manual: AD075588

01 Electrical Main		
01.A	Voltage (Motor)	460 V
01.B	Phase (Motor)	3 ph
01.C	Hz (Motor)	60 hz
01.D	Full Load Amps	TBD
01.E	Horsepower (Flywheel Motor)	2 Hp
01.F	Horsepower (Feedworks Motor)	NA
01.G	Electrical Starter 1	STANDARD CONTACTOR
01.H	Electrical Starter 2	NA
01.I	Electrical Starter 3	NA

02 Electrical Control		
02.A	Voltage (Control)	120VAC (If applicable)
02.B	Short Circuit Current Rating	5 kA
02.C	Electrical Enclosure	MMP ENCLOSURE IP41 NEMA 1#
02.D	Cabinet Stand Included*	NA,
02.E	Standard Requirements 1	Flywheel Start Button
02.F	Standard Requirements 2	1 Stop Button
02.G	Standard Requirements 3	NA
02.H	Special Requirements 1	NA
02.I	Electrical Installation Req.	Customer to install and wire in accordance with N.E.C., All state and local requirements.

03 Mechanical		
03.A	Infeed Speed	110 ft/min (approx.)
03.B	Cut Length	3.25" (calculated)
03.C	Total Equipment Mass	862 lb. (approx.)
03.D	Min. Slab Thickness Req.	NA
03.E	Stand Included	Yes, Sweed AD058101 Stand, non-caster
03.F	Stand Dimensions	See Figure.
03.G	Infeed Opening	Standard - 1.452" H X 7.741" W
03.H	Restrictor Plate Applied	Yes, Standard, (flexible material only)

Revision	Date	Written By	Description of Change	Reviewed By
0	11/8/2022	DAVE L.	Original Issue of Building Spec for General Publication	DAL



Toll Free: 1-800-888-1352

**MACHINE SPECIFICATIONS
AND REPLACEMENT
PART DRAWINGS**

Model: 513AH
Top Level: AD075588
Manual: AD075588

03.I	Feed Dynamics	Hand Feed, Hand assist to open feedworks
03.J	Infeed Height from Floor	NA
03.K	Machine Spillway	Not Included
03.L	Machine Hopper/Container	Yes, ½ YD Self Dumping AD074063
03.M	Number of Rotating Knives	1
03.N	Number of Stationary Knives	1
03.O	Clutch	NA
03.P	Processing Material Type	NA
03.Q	Processing Material Width	NA
03.R	Pneumatic Requirements	SEE ANCILLARY REQUIREMENTS
03.S	Infeed Funnel Safety Paddle	No, this machine is <u>not</u> equipped with a front safety stop infeed paddle. Can be added with Safety Package. Contact Sweed for quote pricing.
03.T	Floor Anchors	Required on stand.
03.U	Exterior Shell	Steel Guarding
03.V	Drive: Motor to Flywheel	Belt VB
	Drive: Other	RC50 Flywheel to Feedworks
03.W	Top Feedroll Specifications	4" DIA. 1045 KNURLED
03.X	Bottom Feedroll Specifications	4" DIA. 1045 KNURLED

04	Ancillary Requirements	
-----------	-------------------------------	--

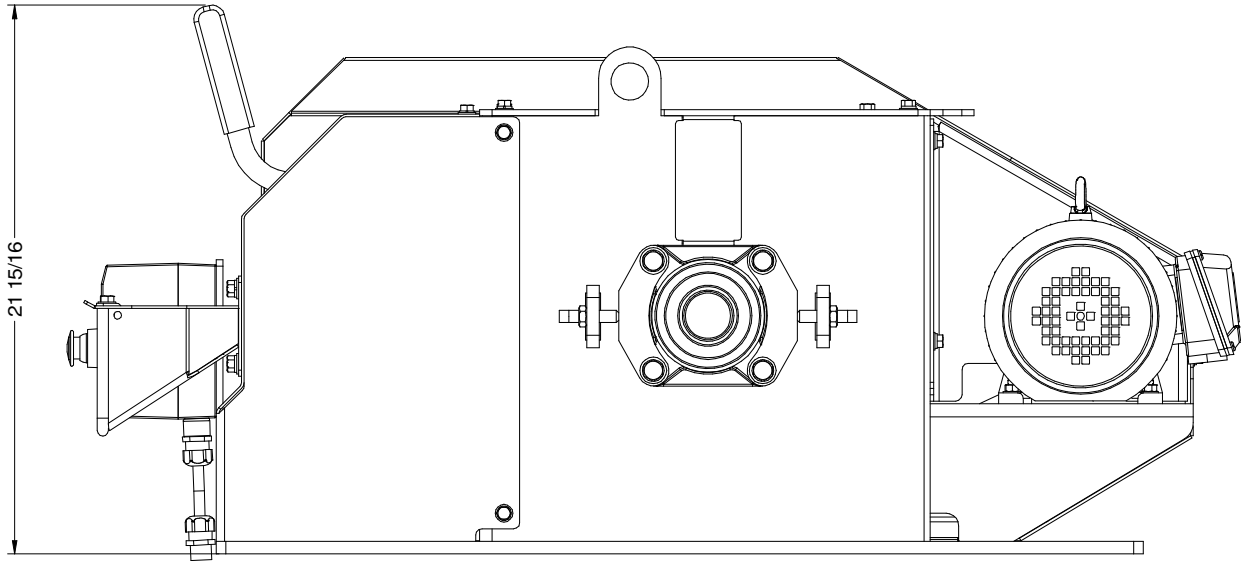
04.A	Compressed Air	None
04.B	*Spillway	Machine is not fitted with an outlet spillway; It is the responsibility of customer to provide adequate product containment under machine. Highspeed flywheel will cause product to exit machine with high velocity/energy and could cause severe injury unless outlet enclosure is adequately built, and product is fully contained during operation. Additionally, if material does not exit spillway immediately but rebounds back into cutting chamber there may be damage caused to machine over time. Sweed does not warranty damage caused to machine by incorrectly designed spillways where material ricochets back into cutting chamber. Contact Sweed Engineering for information if needed.

05	Standards Special	
-----------	--------------------------	--

05.A	CE (European Conformity)	NA
------	--------------------------	----

Revision	Date	Written By	Description of Change	Reviewed By
0	11/8/2022	DAVE L.	Original Issue of Building Spec for General Publication	DAL

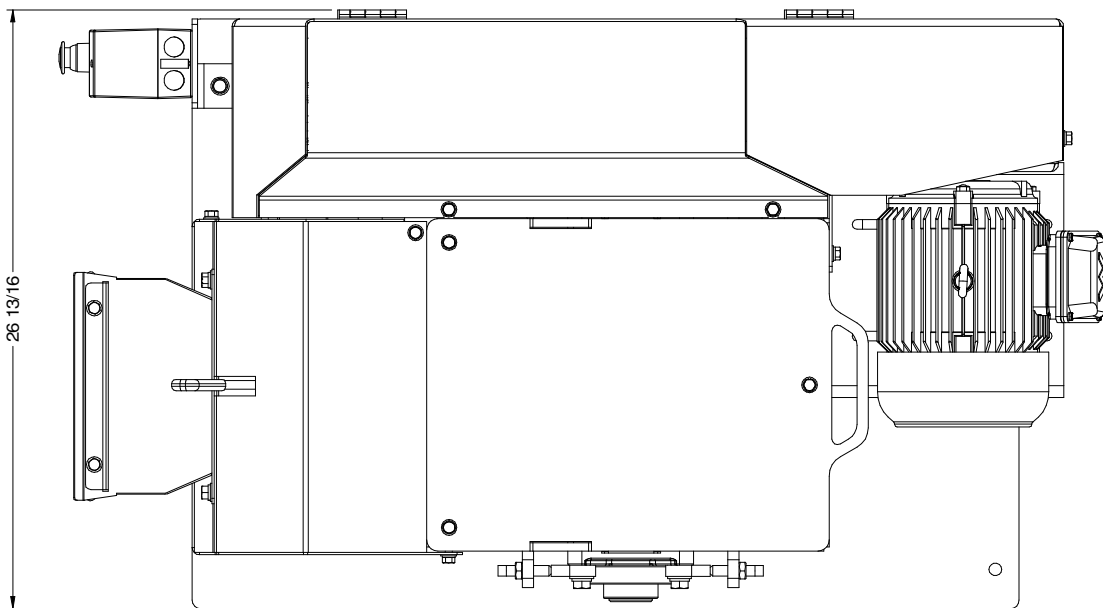
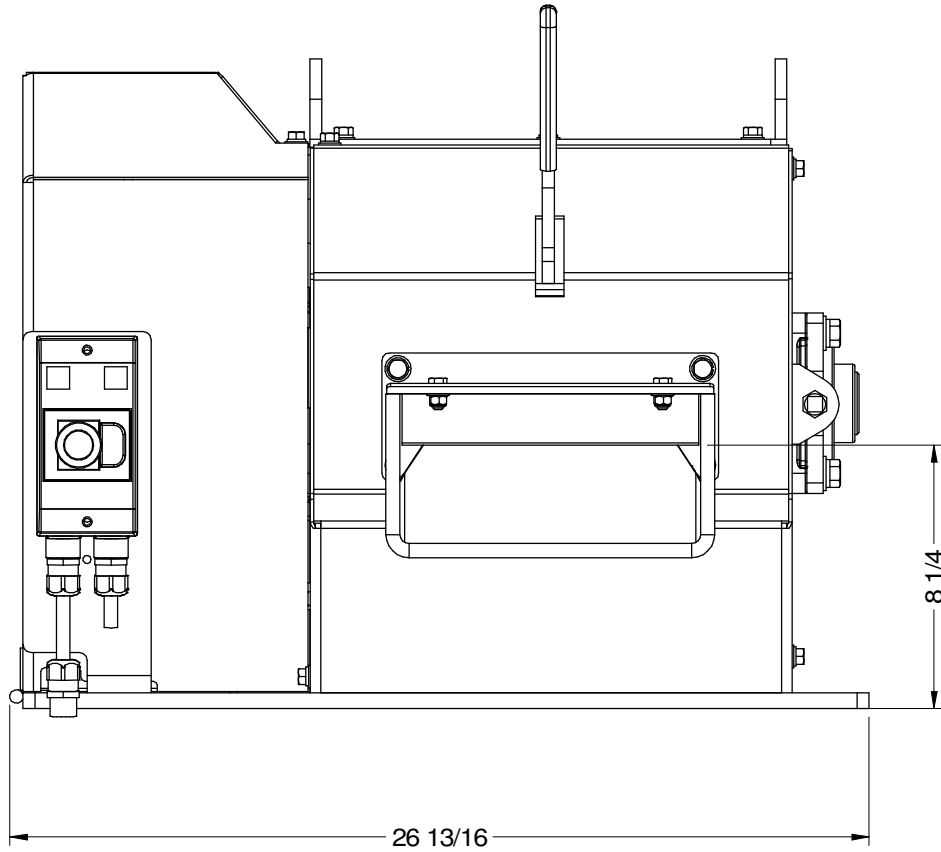
06 Paint Requirements		
06.A	Paint – Body	Standard Sherwin Williams 75KXG14748-4383 SWEED GREEN
06.B	Paint - Safety	Standard Sherwin Williams F75KXE14749-4383 SWEED ORANGE



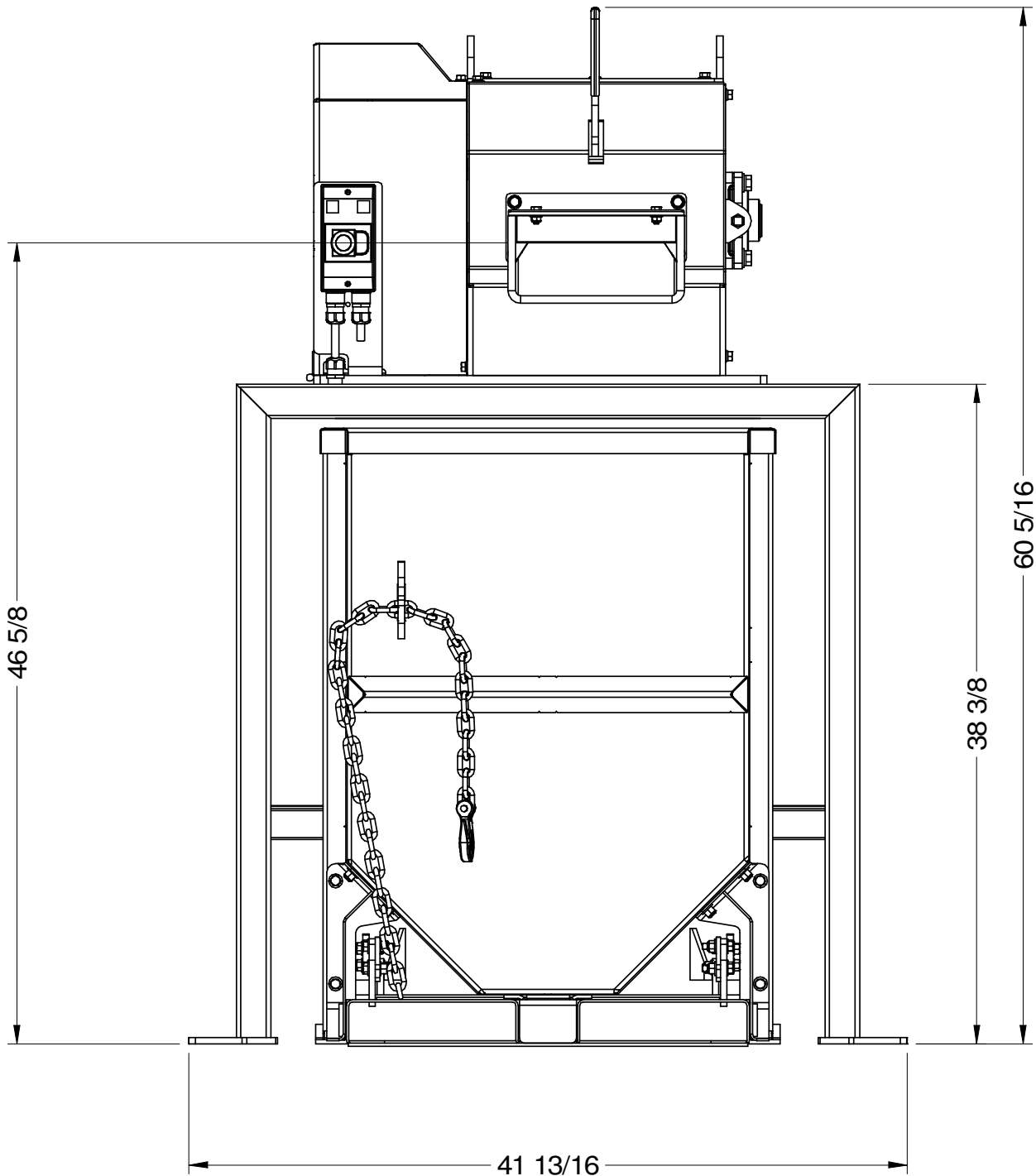
Revision	Date	Written By	Description of Change	Reviewed By
0	11/8/2022	DAVE L.	Original Issue of Building Spec for General Publication	DAL

MACHINE SPECIFICATIONS
AND REPLACEMENT
PART DRAWINGS

Model: 513AH
Top Level: AD075588
Manual: AD075588

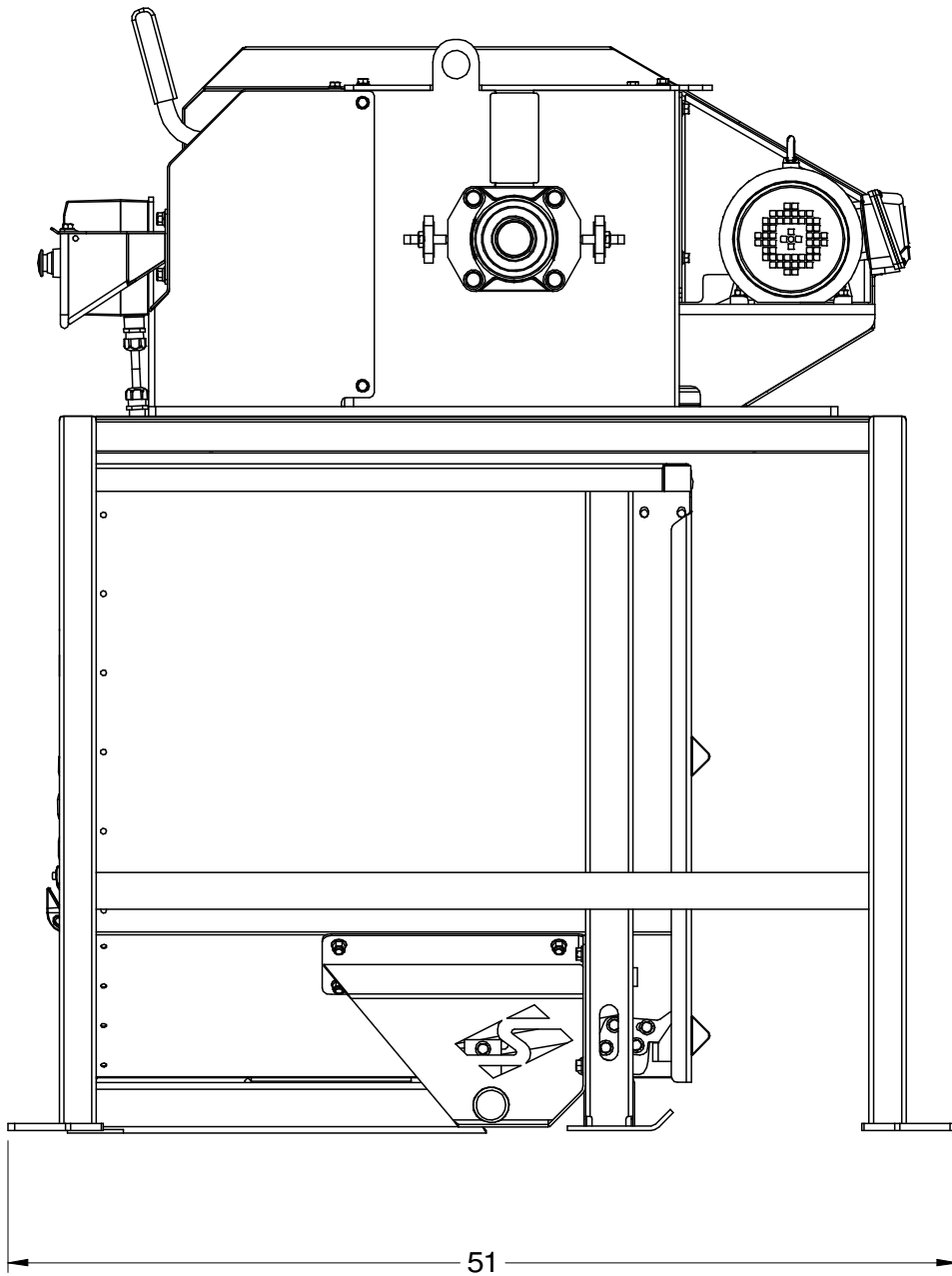


Revision	Date	Written By	Description of Change	Reviewed By
0	11/8/2022	DAVE L.	Original Issue of Building Spec for General Publication	DAL



Additional Comments:

Revision	Date	Written By	Description of Change	Reviewed By
0	11/8/2022	DAVE L.	Original Issue of Building Spec for General Publication	DAL



Revision	Date	Written By	Description of Change	Reviewed By
0	11/8/2022	DAVE L.	Original Issue of Building Spec for General Publication	DAL



Toll Free: 1-800-888-1352

**MACHINE SPECIFICATIONS
AND REPLACEMENT
PART DRAWINGS**

Model: 513AH
Top Level: AD075588
Manual: AD075588

Preventative Maintenance Quick Guide and Recommended Stock Replacement Parts List

Refer to user and maintenance manual to find maintenance information and standard operating procedures.
The following table lists wear items with interval replacement recommendations and Sweed recommendations for minimum stock levels.
Please note an addition column has been added for customer to determine additional stock recommendations if long lead times may cause disruption to facility's flow.

**All replacement parts detailed in this report is on a per machine basis.

Recommended Spare Parts

Qty	Part Number	Description	Recommend Stock (Consumables) Level QTY	Critical Spare Stock min.	Recommended replacement interval
1	KX000330	KIT KNIFE513AH SINGLE CONTAINS (2) KNIVES CB040886 D2,BOLTS (3) FA000095 (3) FA000368	1	1	***
1	CX041460	MAIN CHAIN RC50 X 43 1/2	1	1	AS NEEDED
1	CX041461	FEED ROLL CHAIN RC50 X 34 3/4	1	1	AS NEEDED
1	AB075913	INFEED FUNNEL ASSEMBLY	-	1	AS NEEDED
1	AD074063	HOPPER MAIN ASSEMBLY	-	1	n/a
2	BN000406	SPROCKET, 17T RC50 IDLER WITH BEARING	-	1	AS NEEDED
2	BN001024	BEARING, 1 BORE 2-BOLT FLANGE	-	1	AS NEEDED
1	BN001344	SHEAVE, 3.75 OD 'B' 1-GR QD SH	-	1	AS NEEDED
1	BN001584	SHEAVE, 16.35 OD QD SINGLE GROOVE	-	1	AS NEEDED
2	BX002592	SPROCKET, 12T RC50 TYPE 'B' 1" BORE KW (2) SS	-	1	AS NEEDED
1	BX002770	BUSHING, QD SH 7/8" BORE	-	1	AS NEEDED
1	BX002776	BUSHING, QD SK 1 15/16" BORE	-	1	AS NEEDED
2	BX005041	SPROCKET, 16T RC50 TYPE 'B' 1" BORE KW (2) SS	-	1	AS NEEDED
2	BX008400	BEARING, 1 15/16 4 BOLT FLANGE	-	1	AS NEEDED
1	BX010777	MOTOR, 2HP 1800 230-460/3/60 145T TEFC FOOTMOUNT F-1	-	1	AS NEEDED
1	BX039142	BELT, V B X 64" OUTSIDE LENGTH	1	1	AS NEEDED
1	BX039143	SPROCKET, 35T RC50 'B' 1" BORE KW (2) SS	-	1	AS NEEDED
1	BX039169	SPRING, EXT .750 OD X 3.000 LNG, 39 LBS/IN, 5 LBS INITIAL TEN, 1.4" DEF, 60 LBS MAX	-	1	AS NEEDED
4	BN001024	BEARING, 1 BORE 2-BOLT FLANGE	-	1	AS NEEDED
2	BX039167	SPRING, EXT .750 OD X 3.5 LG X .093 WIRE, 16 IN-LBS, 2.4" TRAVEL	-	1	AS NEEDED
1	CB041008	ANGLE, LOWER FEEDROLL	-	1	AS NEEDED
1	CB043755	ANGLE, UPPER FEEDROLL	1	1	***
4	CB043756	TENSION SPRING BRACKET	-	1	AS NEEDED
2	CB043757	FEEDROLL, 4" DIA 1045 KNURLED	1	1	***
1	BX028039	MMP UVP-ETOP PUSH/PULL	-	1	AS NEEDED

*Depending on wear, this may be sooner or longer and is shown as an approximate projection only, customer should monitor wear weekly to determine approximate replacement intervals.

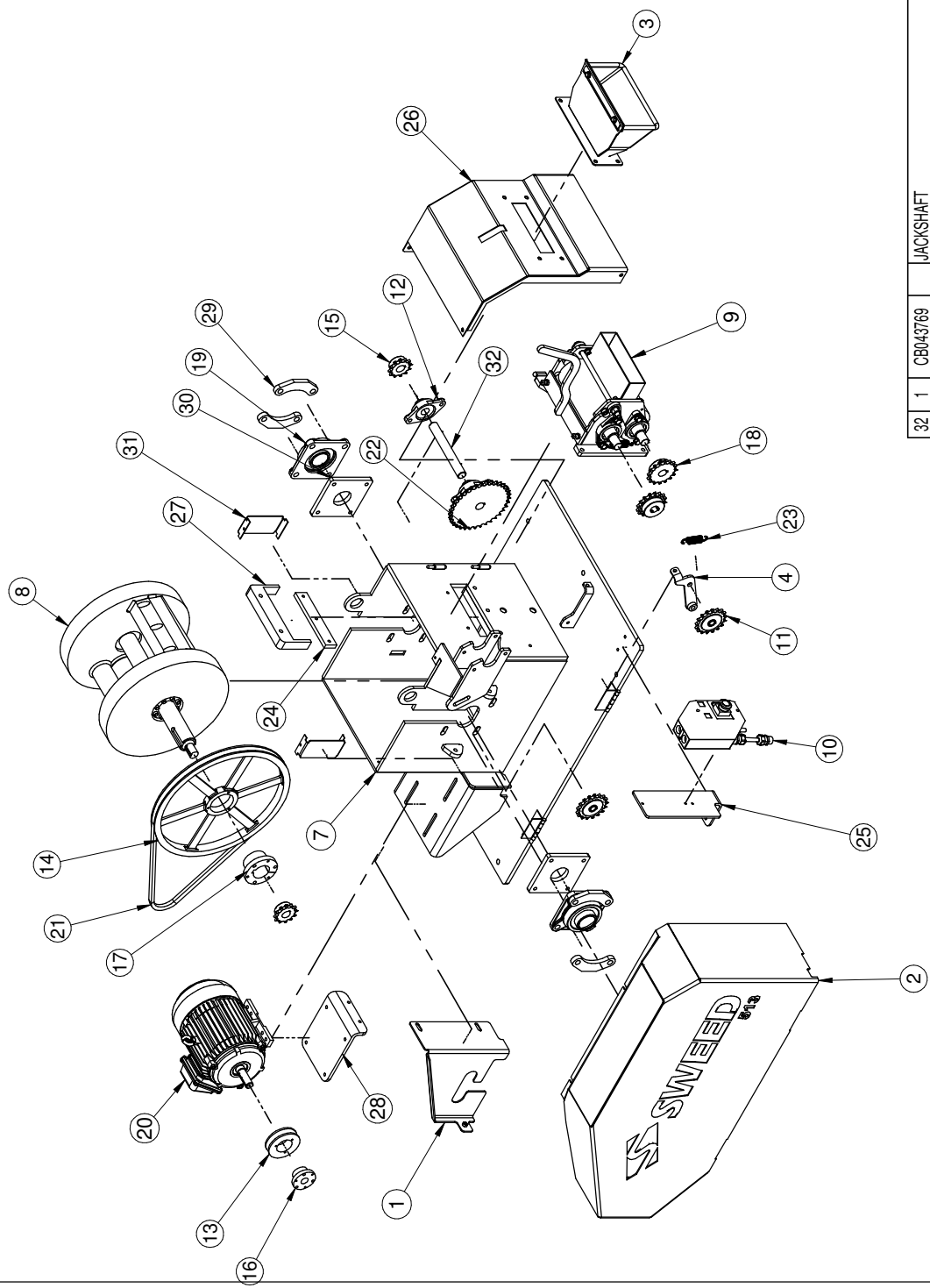
***See OMM Section 16.A/B Trouble Shooting for replacement suggestion.

Revision	Date	Written By	Description of Change	Reviewed By
0	11/8/2022	DAVE L.	Original Issue of Building Spec for General Publication	DAL

#	QTY	SWEED #	REV	DESCRIPTION
27	1	CB043743		MATERIAL GUIDE
26	1	CB043742	A	FEEDWORKS GUARD
25	1	CB043050	A	STARTER MOUNT
24	1	CB040886		D-2 ANVIL KNIFE BAR
23	1	BX039169		SPRING, EXT. 750 OD X 3,000 LING. 39 LBSIN. 5 LBS INITIAL TEN. 1.4" DEF. 60 LBS MAX
22	1	BX039143		SPROCKET, 35T RC50 'B' 1" BORE KW (2) SS
21	1	BX039142		BELT, V X 64" OUTSIDE LENGTH
20	1	BX010777		MOTOR, 2HP 1800 230-460/360 145T TEFC FOOTMOUNT F-1
19	2	BX008400		BEARING, 1 15/16 4 BOLT FLANGE
18	2	BX005041		SPROCKET, 16T RC50 TYPE 'B' 1" BORE KW (2) SS
17	1	BX002776		BUSHING, OD SK 1 15/16" BORE
16	1	BX002770		BUSHING, OD SH 7/8" BORE
15	2	BX002592		SPROCKET, 12T RC50 TYPE 'B' 1" BORE KW (2) SS
14	1	BN001584		SHEAVE, 16.35 OD OD SINGLE GROOVE
13	1	BN001344		SHEAVE, 3.75 OD 'B' 1-GR OD SH
12	2	BN001024		BEARING, 1 BORE 2-BOLT FLANGE
11	2	BN000406		SPROCKET, 17T RC50 IDLER WITH BEARING
10	1	AE074718		STARTER 2.5-4.0 FLA 460/360 CH XT SERIES
9	1	AD075596		FEEDWORKS ASSEMBLY
8	1	AD075595		FLYWHEEL ASSEMBLY, SINGLE KNIFE
7	1	AD075591	A	HOUSING WELDMENT
6*	1	AD074063		HOPPER MAIN ASSEMBLY
5*	1	AD068101		STAND, 55 GAL DRUM & 3/4 YD HOPPER S1 S3
4	1	AB075968		TENSIONER LINK WELD
3	1	AB075913		INFEED FUNNEL ASSEMBLY
2	1	AB075908		DRIVE GUARD WELDMENT
1	1	AB075907		MOTOR GUARD WELDMENT

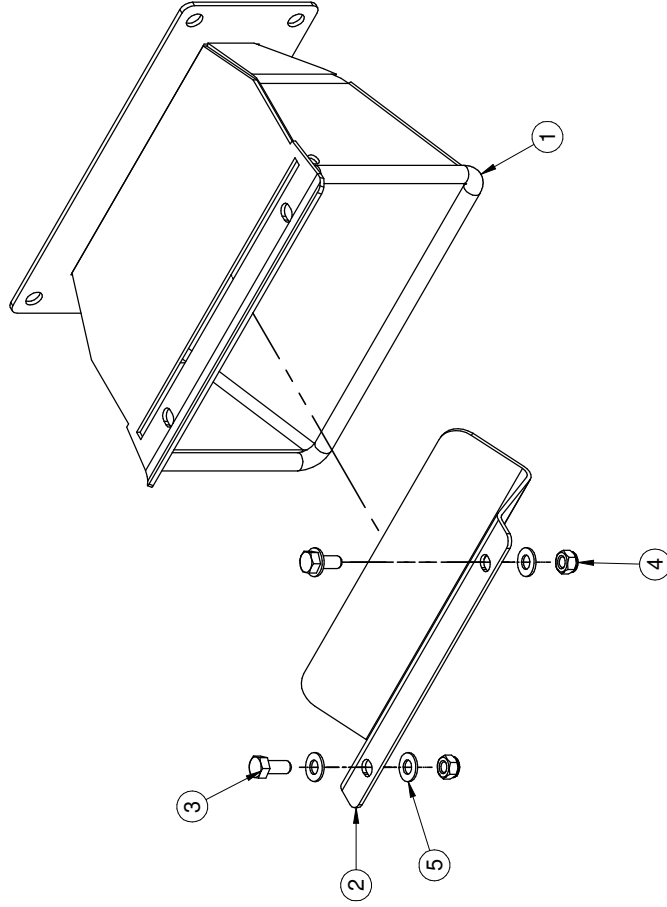
SWEED®

PROJECT: 513 AH
 DO NOT SCALE DRAWING FOR DIMENSIONS
 SIZE: CAD FILE NAME: AD075588
 REVISION: B
 DATE: 5/31/2018
 WEIGHT: 1247.7 lbm
 SHEET: 2 OF 5



#	QTY	SWEED #	REV	DESCRIPTION
32	1	CB043769		JACKSHAFT
31	2	CB043765		KEYHOLE COVER
30	2	CB043764		THREADED BEARING BACKING PLATE
29	4	CB043763		BEARING ADJUSTMENT BRACKET
28	1	CB043762		MOTOR ADJUSTING PLATE

AB075913

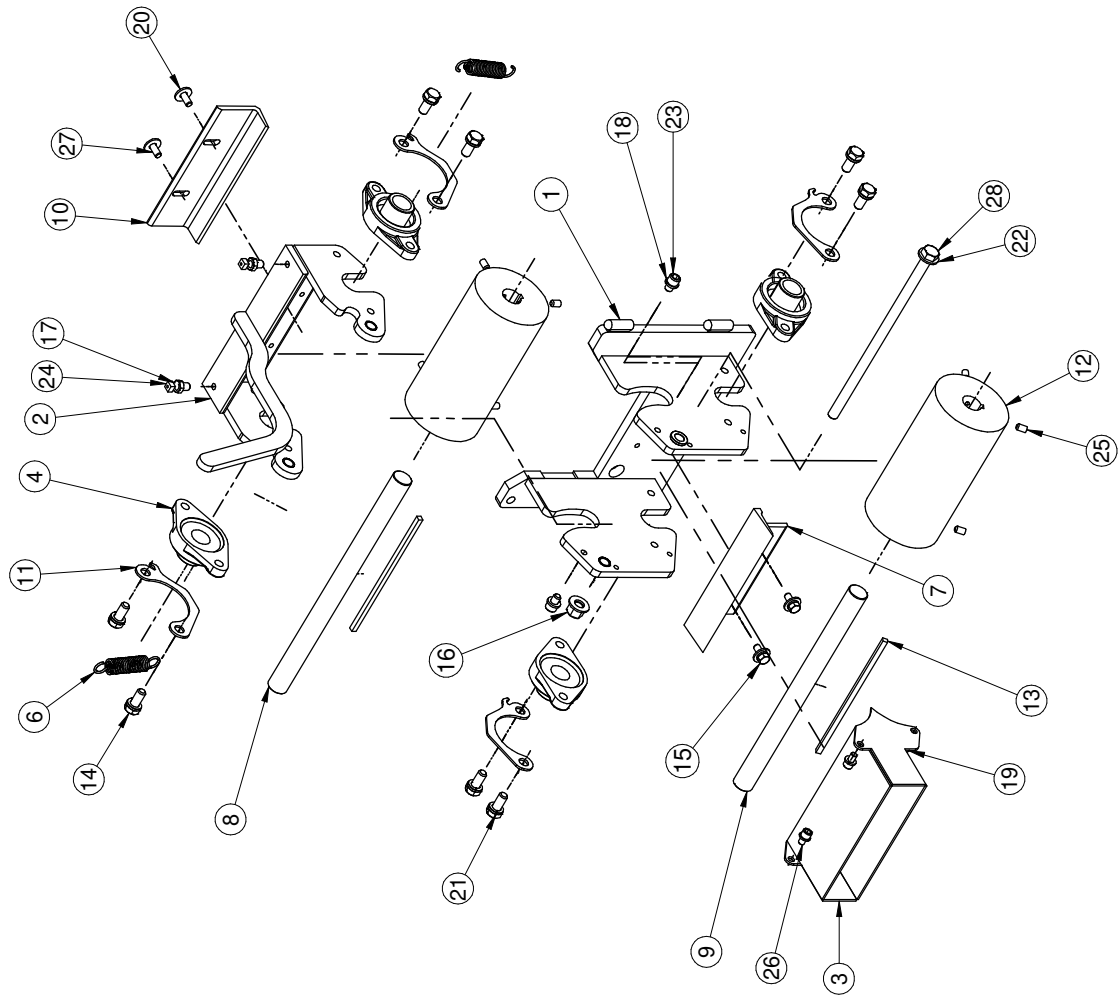


#	QTY	SWEEP #	REV	DESCRIPTION
5	4	FA000113		WASHER, 5/16 FLAT SAE
4	2	FA000064		NUT, 5/16-18 NYLOCK HEX
3	2	FA000048		BOLT, 5/16-18 X 3/4
2	1	CB043761		INFEED RESTRICTOR PL
1	1	AB075914		INFEED FUNNEL WELD



PROJECT	
513 AH	
DO NOT SCALE DRAWING FOR DIMENSIONS	
SIZE	REVISION
B	AD075588
DATE	WEIGHT
5/31/2018	1247.7 lbrm
SHEET	3 OF 5

AD075596



28	1	FA000824	BOLT, 1/2-13 X 11 HEX HEAD GRADE 5
27	2	FA000761	SCREW, 5/16-18 X 3/4 BUTTON HEAD
26	4	FA000741	BOLT, 5/16-18 X 1/2 SHCS
25	8	FA000429	SCREW, 5/16-18 X 1/2 SET SOCKET HEAD
24	2	FA000405	SCREW 3/8-16 X 1 SET SQ HEAD
23	2	FA000366	BOLT, 3/8-16 X 1/2, SHCS
22	2	FA000308	WASHER, 1/2 FLAT SAE PLATED
21	8	FA000125	WASHER, 7/16 LOCK SPLIT ZINC
20	4	FA000112	WASHER, 5/16 FLAT USS
19	6	FA000111	WASHER, 5/16 LOCK SPLIT
18	2	FA000110	WASHER, 3/8 LOCK SPLIT
17	2	FA000060	NUT, 3/8-16 HEX JAM
16	1	FA000054	NUT, 1/2-13 HEX NYLOCK
15	2	FA000048	BOLT, 5/16-18 X 3/4
14	8	FA000033	BOLT, 7/16-14 X 1 HEX HEAD
13	2	CX041458	KEY 1/4 X 1/4 X 7.5/8
12	2	CB043757	FEEDROLL, 4" DIA 1045 KNURLD
11	4	CB043756	TENSION SPRING BRACKET
10	1	CB043755	ANGLE, UPPER FEEDROLL
9	1	CB043754	LOWER FEEDROLL SHAFT
8	1	CB043753	UPPER FEEDROLL SHAFT
7	1	CB041008	B ANGLE, LOWER FEEDROLL
6	2	BX039167	SPRING, EXT .750 OD X 3.5 LG X .088 WIRE, 16 IN-LBS, 2.4" TRAVEL
5*	1	BN001623	GRIP, 3/4" I.D X 5 1/8" LONG,
4	4	BN001024	BEARING, 1 BORE 2-BOLT FLANGE
3	1	AB075911	INFEED TUBE
2	1	AB075910	A UPPER FEEDWORKS BRACKET WELDMENT
1	1	AB075909	FEEDWORKS FRAME WELDMENT
#	QTY	SWEED #	REV
			DESCRIPTION

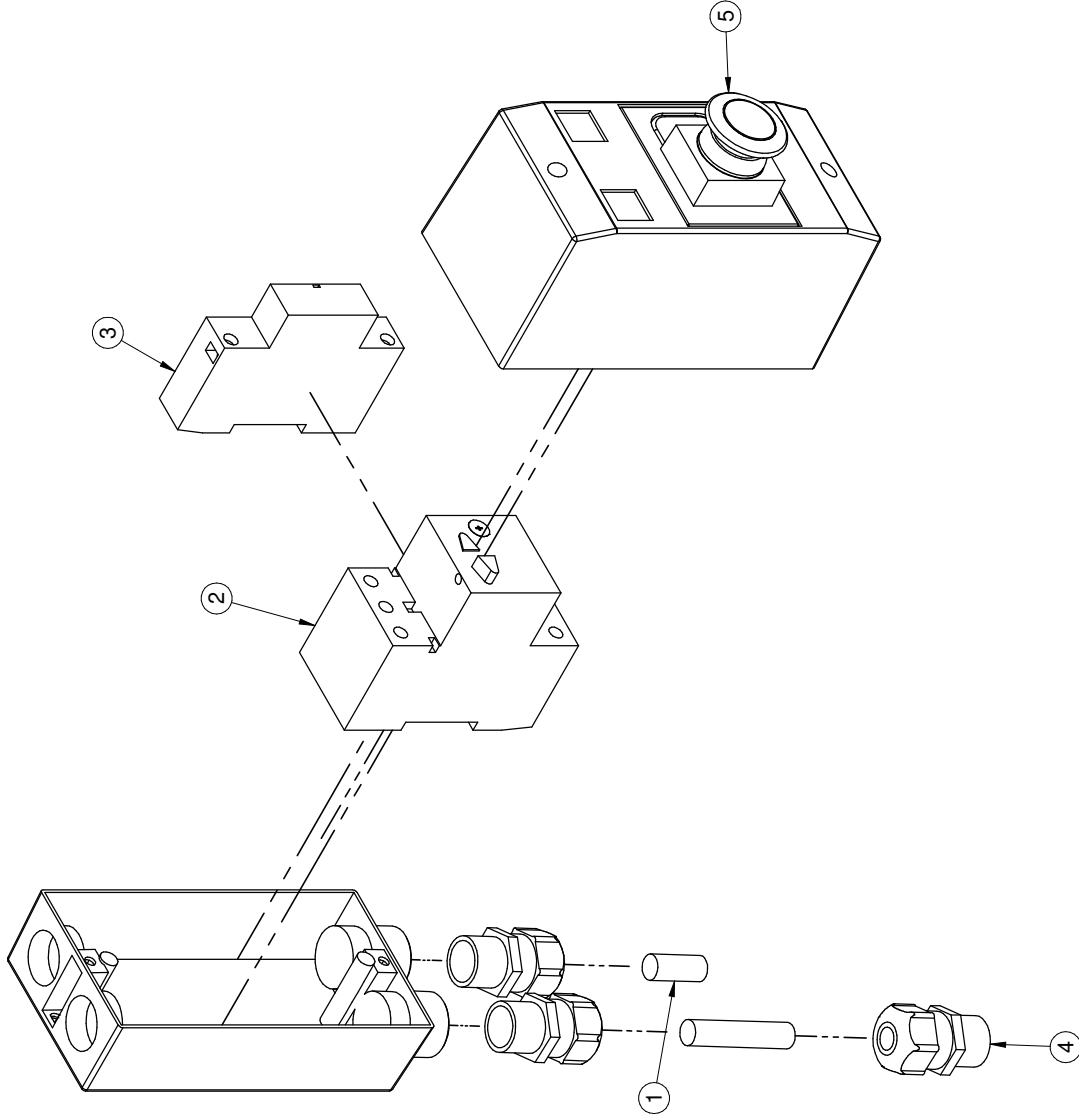
SWEED®

PROJECT: 513 AH
 DO NOT SCALE DRAWING DIMENSIONS

SHEET: B
 DRAW FILE NAME: AD075588
 REVISION:

DATE: 5/31/2018
 WEIGHT: 1247.7 lbrn
 SHEET: 4 OF 5

AE074718



#	QTY	SWEED #	REV	DESCRIPTION
5	1	BX028039		MMP UVP-ETOP PUSH/PULL
4	3	BX023596		FTGE, CORD, 38-50, ST 1/2"
3	1	BX023128		MMP XT UVR 480V60HZ
2	1	BX023016		MMP XT 2.5-4.0 FLA
1	1	BX020018		CORD, SO-W 16/4 BLK

SWEED®

PROJECT: 513 AH
DO NOT SCALE DRAWING FOR DIMENSIONS

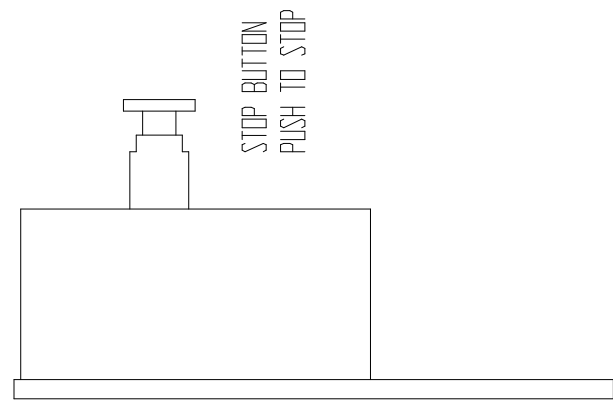
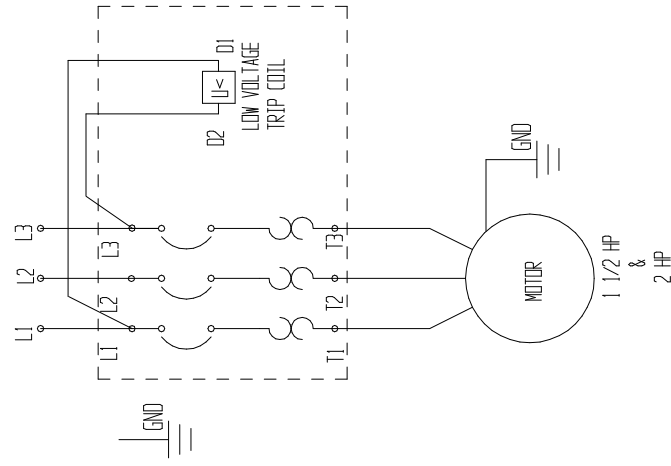
SIZE: B
CAD FILE NAME: AD075588
REVISION:

DATE: 5/31/2018
WEIGHT: 1247.7 lbrn
SHEET: 5 OF 5

REVISITONS

REV.	DESCRIPTION	BY	APPROVAL	DATE
A	ADDED 513			8/24/18

CUSTOMER TO SUPPLY SERVICE DISCONNECT IN ACCORDANCE WITH N.E.C. & ALL STATE & LOCAL REQUIREMENTS.



REV.	FILE	SCALE: DNS
 Sweed Machinery, Inc. P.O. Box 228 Gold Hill, Oregon 97525 (541) 855-1512		DATE: 12/20/05
		DRAWN BY: WAH
		CHECKED BY:
		APPROVED BY:

510 THRU 513, MFP STARTER, UNDERVOLT RELEASE
1 1/2 HP & 2 HP 208/3/60, 230/3/60, 460/3/60, 575/3/60
DWG. #: E8009501