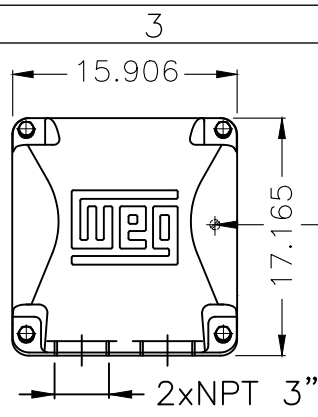


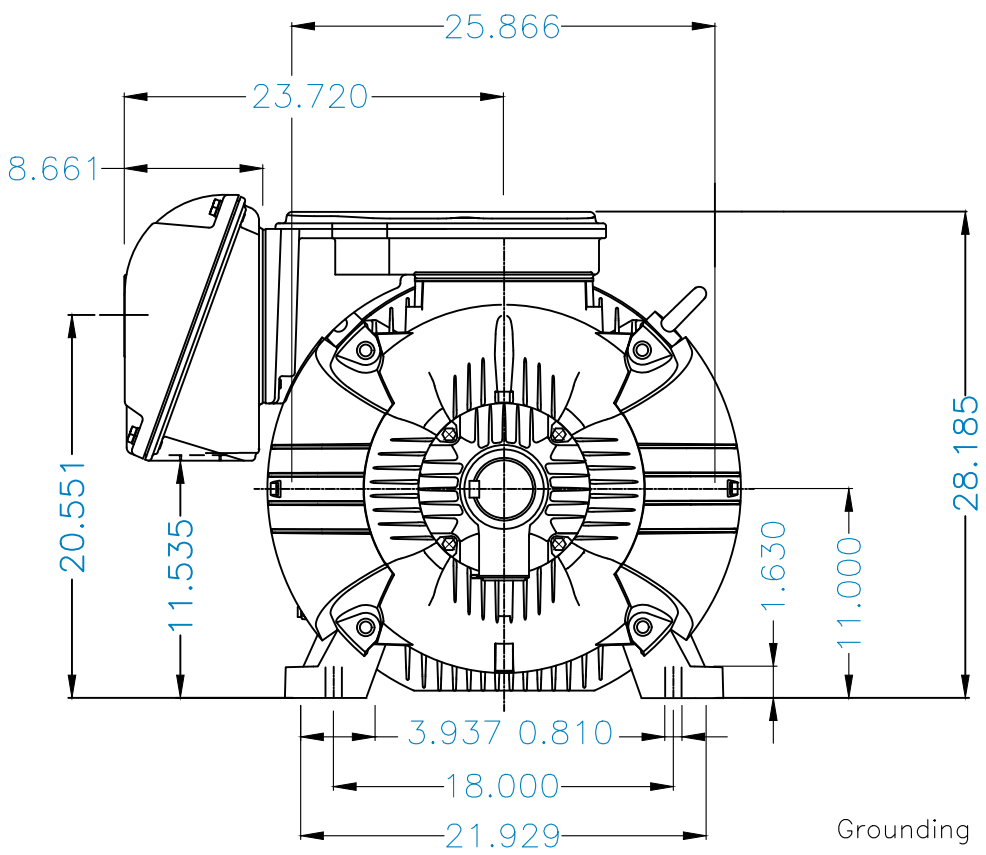
EIXO/SHAFT		Dimensões em polegada Dimensions in inches
PADRÃO/STANDARD	X	
OPCIONAL/OPTIONAL		
ESPECIAL/SPECIAL		

THIS IS AN UPDATED REVISION, THE PREVIOUS ONE MUST BE DISREGARDED.

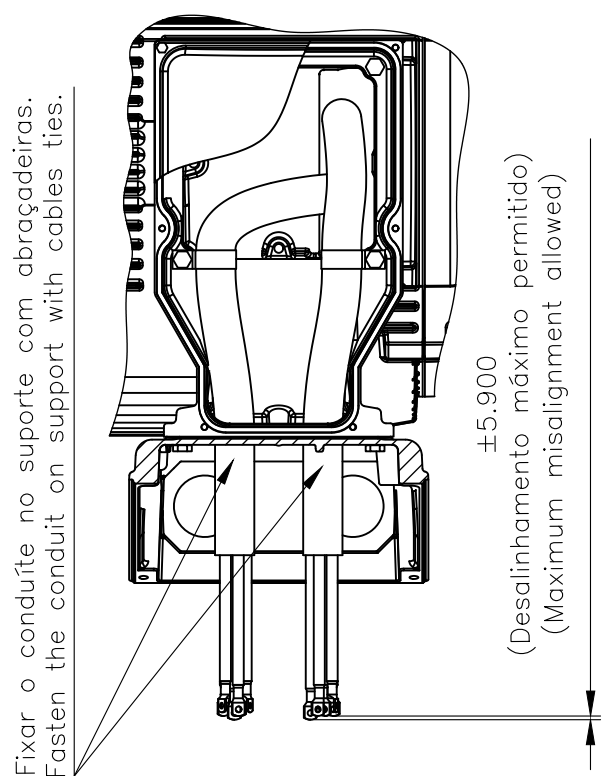
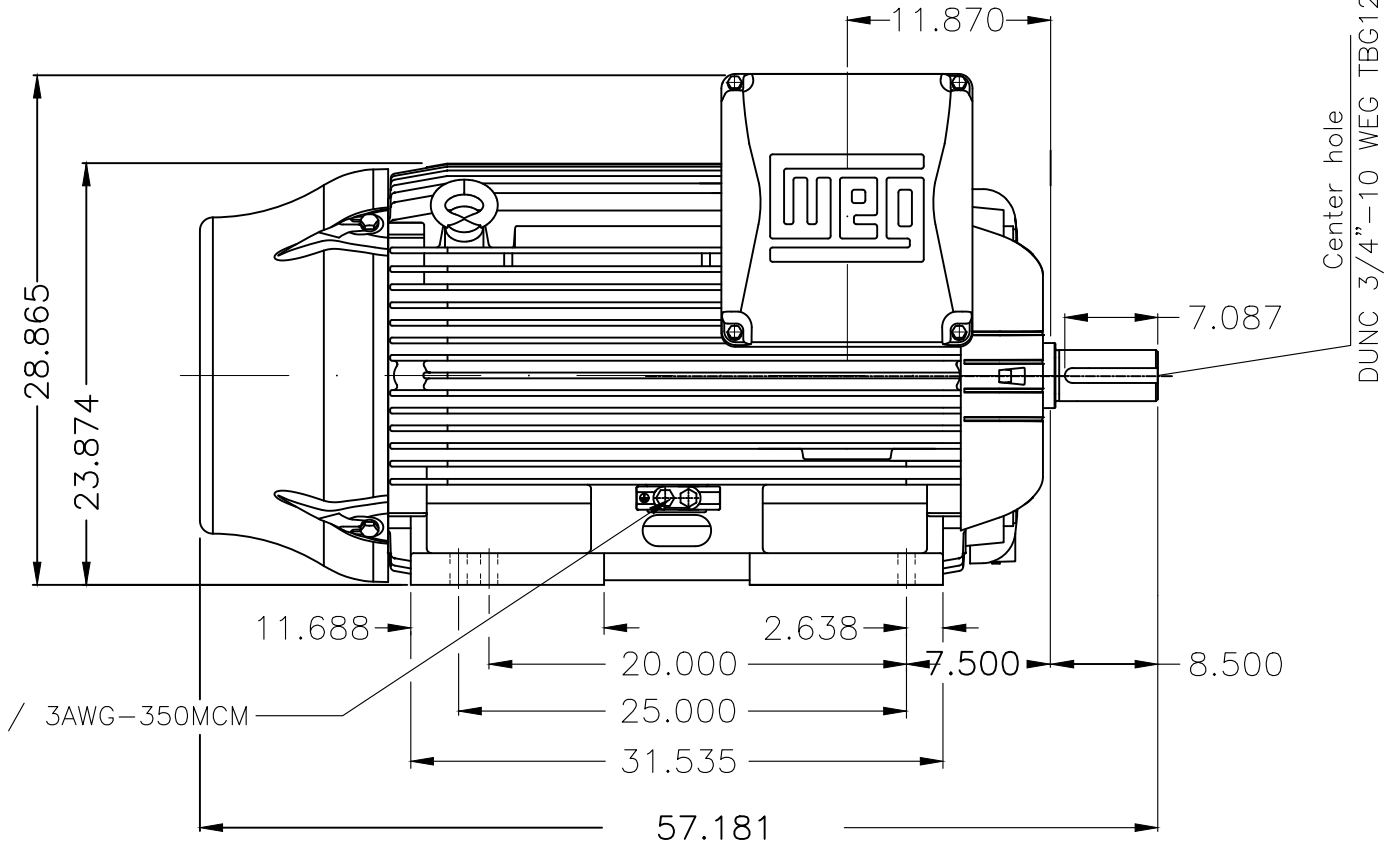


Grounding for leads 35-70 mm² / 1-2/0 AWG

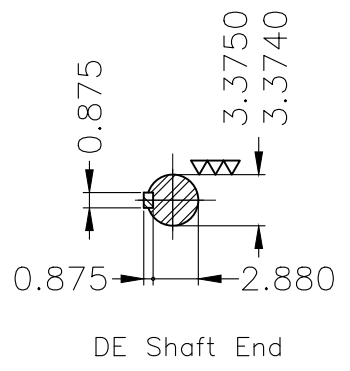
Main terminal box



Grounding for leads 25-185 mm² / 3AWG-350MCM



Fixar o conduíte no suporte com abraçadeiras.
Fasten the conduit on support with cables ties.



Defletor de ar dianteiro / Drive-End Air Deflector
Rolamento dianteiro de rolos / DE roller bearing
Conduíte para cabos no interior do suporte da caixa de ligação Cables conduit inside terminal box support
Dispositivo de travamento de eixo / Shaft locking device
Linha do motor: Crusher Duty / Motor purpose: Crusher Duty
Tampa traseira com mancal eletricamente isolado NDE endshield with electrically insulated bearing hub
Cor RAL 5009 / Color RAL 5009
Plano de pintura 203A / Painting plan 203A
Forma construtiva B3D / Mounting B3R(D)

WEG EQUIPAMENTOS ELÉTRICOS S/A

500002871068	ALTERADO CONFORME CLAIM 422125681	MBRONDANI	ELIOM	ELIOM	26.03.2025	06			
500001731403	ALTERADO CFME CLAIM 417220375	SCATOLIN	DALTONR	DALTONR	28.02.2020	05			
ECM	LOC	SUMMARY OF MODIFICATIONS			EXECUTED	CHECKED	RELEASED	DATE	VER
EXECUTED	GABRIELID	THREE PHASE W22 MOTOR			10004946483				
CHECKED	JMANENTE	FRAME L447/9T IP55 TEFC			000 06				
RELEASED	JMANENTE								
REL DT	23.05.2017	WMO	JARAGUÁ DO SUL	ENGENHARIA DE PRODUTO	SHEET 1 / 1				

350 HP	06 Poles	60Hz	414668751	C
450 HP	04 Poles	60Hz	414668751	B
400 HP	04 Poles	60Hz	414668751	A



MADE IN MEXICO
11408910



FOR SAFE AREA
Mod.TE1BFOXON
CC029A



Class I, Div 2, Gr A, B, C, D - T2C
Class I, Zone 2, IIC - T2C
Class II, Div 2, Gr F, G - T3C
For use on PWM: Gr. A, B, C, D, F,
VT 1000:1, CT 6:1, 1.00SF - T3

MODEL 40018ET3GRB449T-W22

Inverter Duty Motor
Severe Duty
With NDE insulated endshield

PH3 60Hz Fr. L447/9T 1000m.a.s.l. IP55 TEFC 3255lb

V 460

A 445

HP 400

kW 300

SF 1.15

SFA 512

RPM 1785

PF 0.88

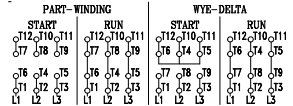
AMB 40°C

INS cl. F DT80K

NEMA NOM EFF 96.2%

DUTY CONT.

DES B Code G



→ NU-322-C3 (60g)

→ 6319-C3 (45g)



MOBIL POLYREX EM (4000h)

